



**European Society of  
MusculoSkeletal Radiology**

# **Musculoskeletal Ultrasound Technical Guidelines**

## **I. Shoulder**

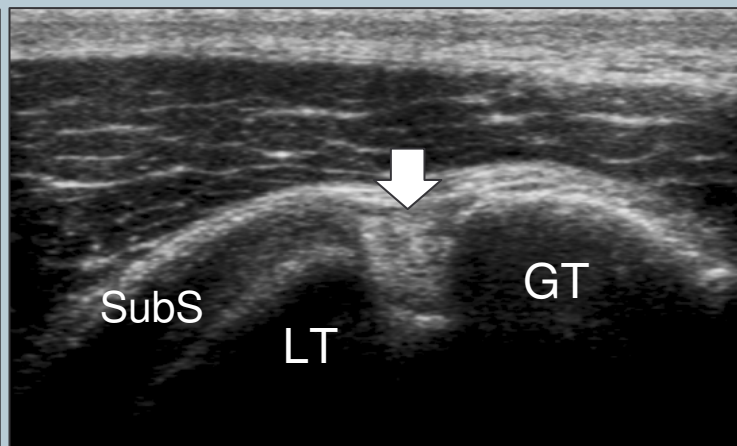
Ian Beggs, UK  
Stefano Bianchi, Switzerland  
Angel Bueno, Spain  
Michel Cohen, France  
Michel Court-Payen, Denmark  
Andrew Grainger, UK  
Franz Kainberger, Austria  
Andrea Klauser, Austria  
Carlo Martinoli, Italy  
Eugene McNally, UK  
Philip J. O'Connor, UK  
Philippe Peetrans, Belgium  
Monique Reijnierse, The Netherlands  
Philipp Rempik, Germany  
Enzo Silvestri, Italy

## 1

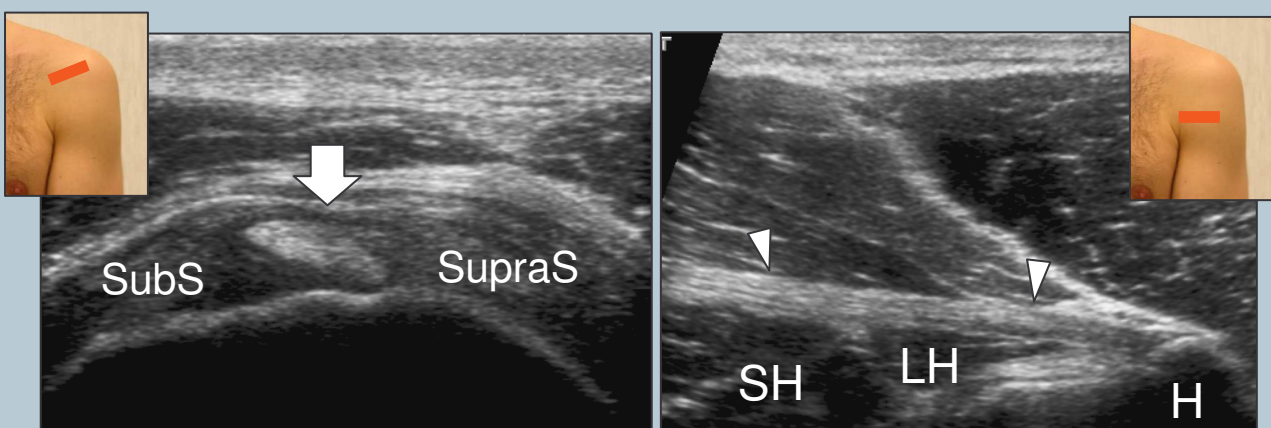
Although patient's positioning for shoulder US varies widely across different Countries and Institutions reflecting multifaceted opinions and experiences of different examiners, we strongly recommend to examine the patient while seated on a revolving stool. This position allows the examiner to reach the anterior, lateral and posterior aspects of the shoulder with the probe by simply asking the patient to rotate on the chair.

## 2 long head of the biceps tendon

Place the arm in slight internal rotation (directed towards the contralateral knee) with the elbow flexed 90°, palm up. Start by finding the long biceps tendon in between the greater and lesser tuberosities – Use short and long (more limited utility) axis planes to examine the biceps.



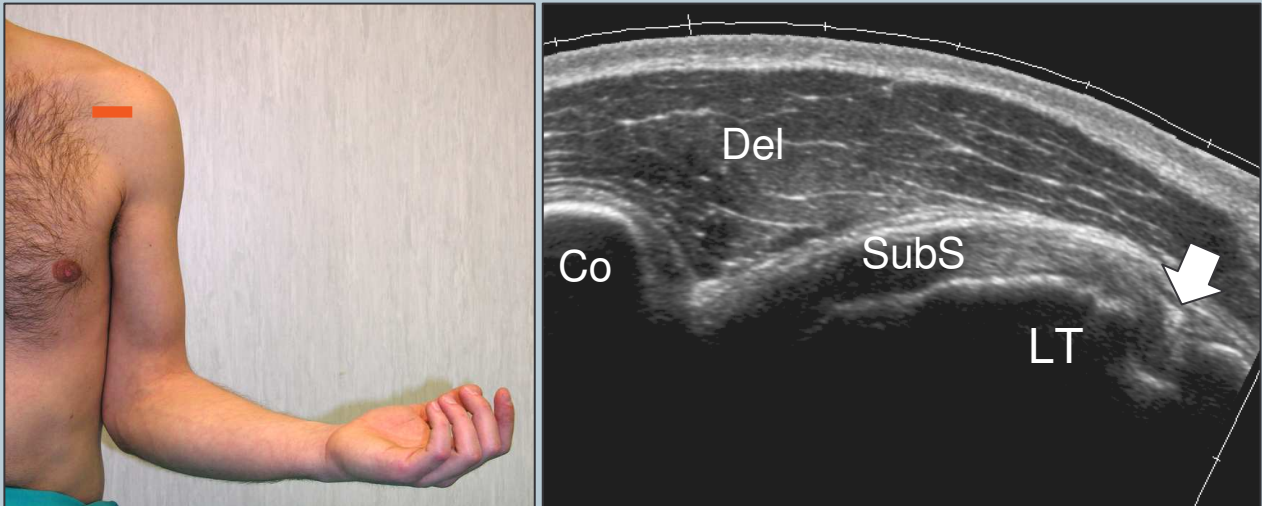
Shift the probe up to examine the biceps in its intraarticular course and down to reach the myotendinous junction (level of the pectoralis major tendon).



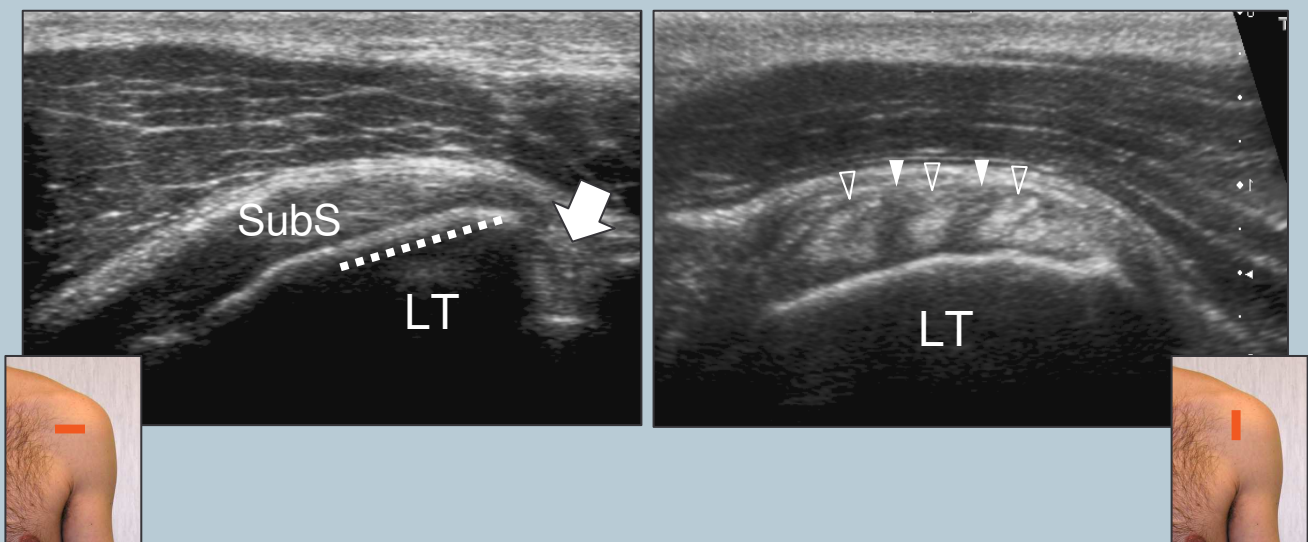
*Legend:* SubS, subscapularis tendon; SupraS, supraspinatus tendon; Arrow, long head of the biceps tendon; LT, lesser tuberosity; GT, greater tuberosity; SH, short head of the biceps; LH, long head of the biceps; H, humeral shaft; Arrowheads, pectoralis major tendon

### 3 subscapularis tendon

Rotate the arm externally fixing the elbow on the iliac crest to show the subscapularis tendon and its insertion on the lesser tuberosity (slight supination of the hand may be helpful to neutralize the tendency to lift and abduct the elbow from the lateral chest wall).



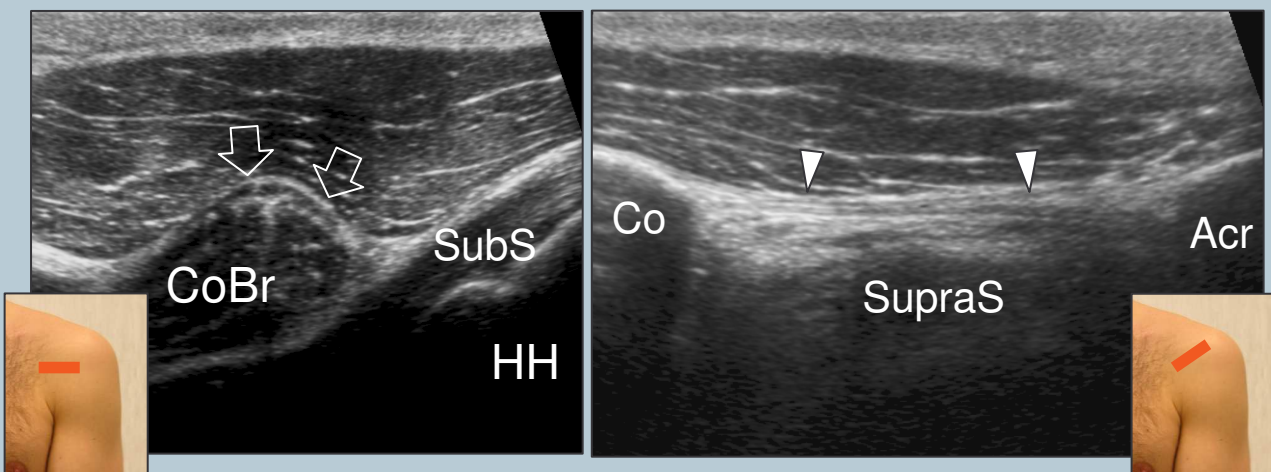
This tendon should be evaluated along its long- (transverse planes) and short- (sagittal planes) axis during passive external and internal rotation with hanging arm. Sweep the transducer up and down over the subscapularis until its full width is demonstrated.



*Legend:* Arrow, long head of the biceps tendon; dashed line, insertion of the subscapularis tendon; Co, coracoid; Del, deltoid muscle; LT, lesser tuberosity; SubS, subscapularis tendon; void arrowheads, tendon fascicles of the subscapularis; white arrowheads, muscle tissue interposed between tendon fascicles

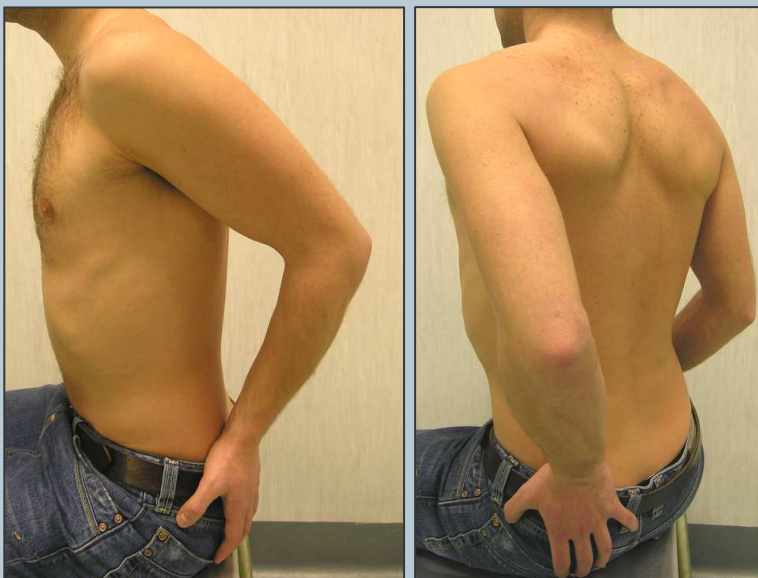
## 4 anteromedial structures and coracoacromial ligament

Moving the probe toward medial on transverse planes, look at the coracoid process, the coracoacromial ligament (the medial margin of the transducer is on the coracoid process and the lateral edge is shifted upward and laterally towards the acromion), the conjoint tendon and the anterior aspect of the subacromial subdeltoid bursa. Then, check the subscapularis recess and the subcoracoid bursa for effusion. External and internal rotation may also be used to demonstrate anteromedial impingement (distance between coracoid process and lesser tuberosity measured in internal rotation).



*Legend:* Acr, acromion; Arrows, short head of the biceps; Arrowheads, coracoacromial ligament; Co, coracoid; CoBr, coraco-brachialis; HH, humeral head; SubS, subscapularis tendon; SupraS, supraspinatus

## 5 supraspinatus tendon: positioning (1)

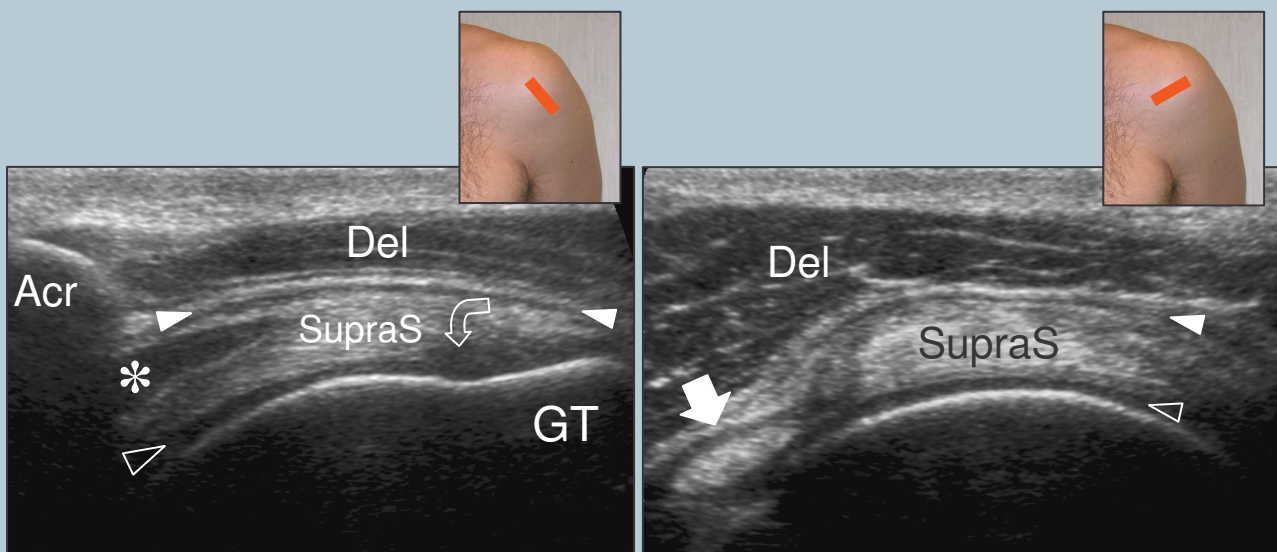
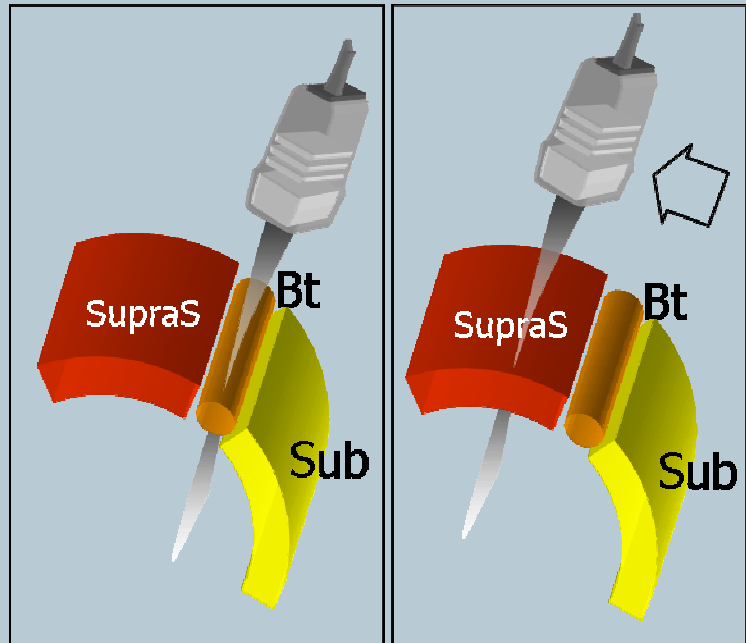


Place the patient's arm posteriorly, placing the palmar side of the hand on the superior aspect of the iliac wing with the elbow flexed and directed posteriorly. The supraspinatus tendon should be evaluated along its long- and short-axis.



## 5 supraspinatus tendon

Refer to the intraarticular portion of the biceps as a landmark to obtain proper transducer orientation for imaging the supraspinatus. In fact, these tendons run parallel one to the other and the intraarticular portion of the biceps is easy to be recognized due to a more clearly defined fibrillar pattern. One should rotate the transducer until the biceps is depicted as more elongated as possible in the US image. Then, the probe is shifted upward and posteriorly over the supraspinatus without changing its orientation. The resulting image is in axis with the supraspinatus. Between the supraspinatus and the deltoid, the normal subacromial-subdeltoid bursa appears as a thin hypoechoic band.

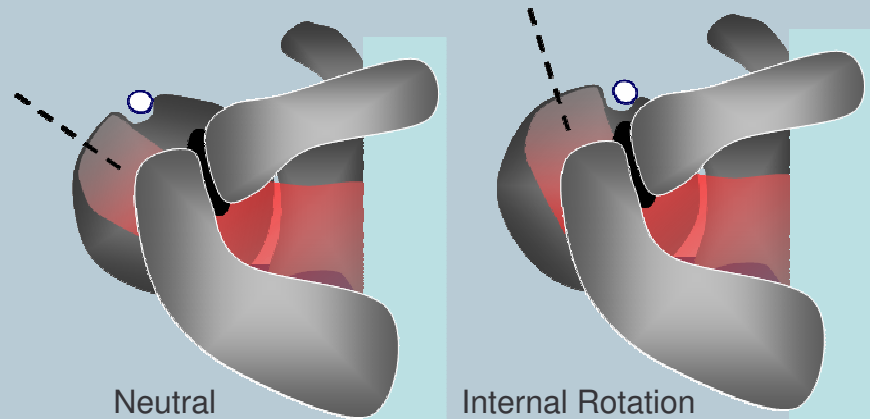


Tilt the transducer gently in the area overlying the tendon insertion to avoid anisotropy. Remember to scan the lateral pouch of the subacromial subdeltoid bursa along the lateral edge of the greater tuberosity. When looking for the supraspinatus on short-axis, the normal cuff must have almost the same thickness from the biceps tendon landmark until 2cm backwards: from this point backwards the tendon seen is the infraspinatus.

*Legend:* Acr, acromion; asterisk, myotendinous junction; Del, deltoid muscle; GT, greater tuberosity; void arrow-head, articular cartilage; curved arrow, hypoechoic artifact related to anisotropy; straight arrow, long head of the biceps tendon; SupraS, supraspinatus tendon; white arrowhead, subacromial subdeltoid bursa

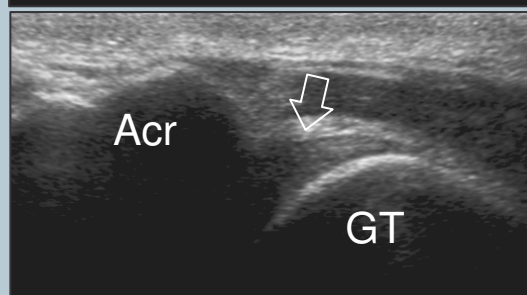
## 6 supraspinatus tendon: positioning (2)

Place the dorsum of the hand over the opposite back pocket (forced internal rotation, stress manoeuvre). There should not be any space gap between the elbow and the lateral chest wall. Using this position, the supraspinatus becomes a more anterior structure and the transducer should be oriented almost vertically to be in axis with it. Consider that the tendon fibers are more stretched than in the position described at point -5. This may be possible cause of overestimation of tear size. Due to an excessive internal rotation, the long head of the biceps tendon may be difficult to be visualized in this position.



## 7 subacromial impingement test

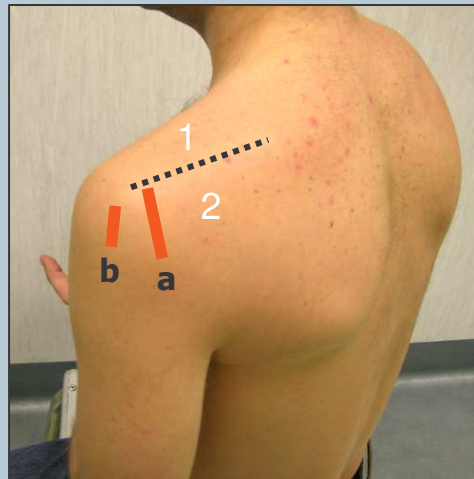
Dynamic assessment of subacromial (antero-superior) impingement can be attempted by placing the probe in the coronal plane with its medial margin at the lateral margin of the acromion. The patient abducts his arm while in internal rotation. With this manoeuvre, the supraspinatus and the bursa can be seen passing deep to the coracoacromial arch.



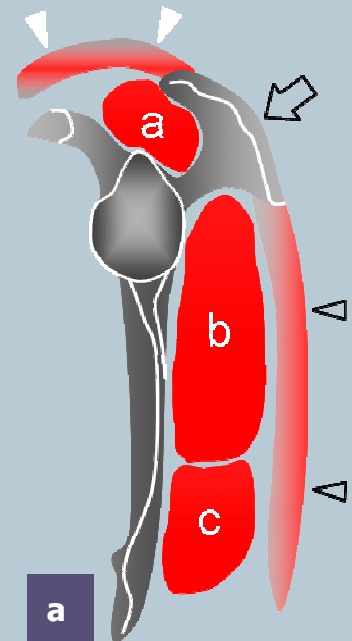
Legend: Acr, acromion; GT, greater tuberosity; arrows, supraspinatus tendon

## 8 infraspinatus and teres minor tendons

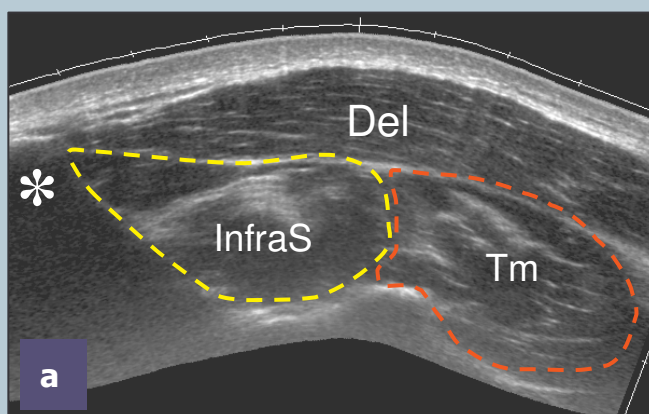
Place the transducer over the posterior aspect of the glenohumeral joint with the arm in the same position described at point-2 (or with the hand on the opposite shoulder) and increase the depth to include the structures of the posterior fossa within the field-of-view of the US image. Use the spine of the scapula as the landmark to distinguish the supraspinous fossa (transducer shifted-up) from the infraspinous fossa (transducer shifted-down) on sagittal planes.



*Legend:* a, supraspinatus; arrow, spine of the scapula; b, infraspinatus; c, teres minor; dashed line, spine of the scapula; 1, supraspinous fossa; 2, infraspinous fossa; void arrowheads, deltoid; white arrowheads, trapezius



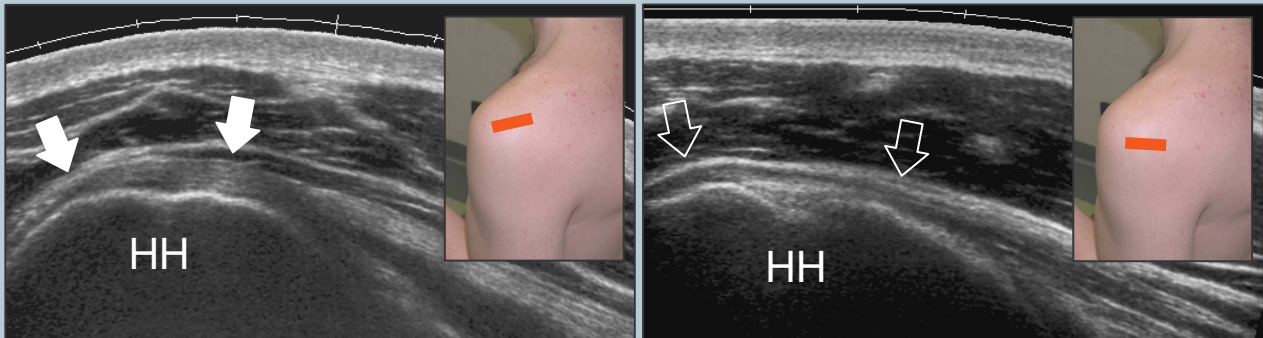
Look at the infraspinatus and teres minor muscles as individual structures filling the infraspinous fossa deep to the deltoid. After scanning these muscles, sweep the transducer toward the greater tuberosity on sagittal planes. The two tendons can be appreciated as individual structures arising from the respective muscles.



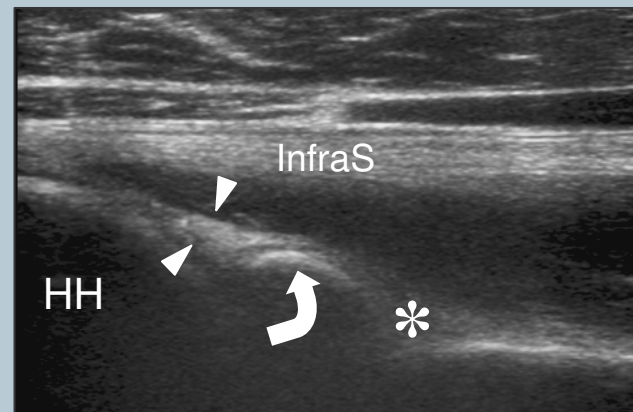
*Legend:* asterisk, spine of the scapula; dashed line, spine of the scapula; Del, deltoid muscle; GT, greater tuberosity; InfraS, infraspinatus muscle; Tm, teres minor muscle; void arrow, teres minor tendon; white arrows, infraspinatus tendon

## 9 posterior structures and posterior glenohumeral joint recess

Examine these tendons separately on their long-axis (transverse planes) during external and internal rotation of the arm (same position as in point-2) by placing the probe over the posterior aspect of the glenohumeral joint.



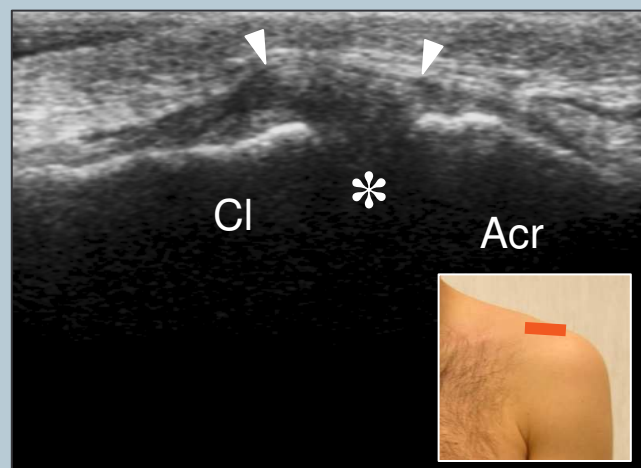
Look at the posterior labrum-capsular complex and check the posterior recess of the joint for effusion during scanning. In thin subjects the posterior labrum can be clearly seen. Move the transducer medial to the labrum on transverse plane to visualize the spinoglenoid notch. It is often necessary to increase the depth of the field-of-view not to miss this area. A paralabral cyst originating in this area should be sought.



*Legend:* asterisk, spinoglenoid notch; curved arrow, bony glenoid; HH, humeral head; InfraS, infraspinatus; void arrows, teres minor tendon; white arrows, infraspinatus tendon; white arrowheads, posterior labrum

## 10 acromioclavicular joint

Place the transducer in the coronal plane over the shoulder to examine the acromioclavicular joint. Sweep the transducer anteriorly and posteriorly over this joint to assess the presence of an os acromiale. Shifting the probe posterior to the acromioclavicular joint, it is possible to assess the status of the supraspinatus muscle.



*Legend:* Acr, acromion; arrowheads, superior acromioclavicular ligament; asterisk, acromioclavicular joint space; Cl, clavicle





**European Society of  
MusculoSkeletal Radiology**

# **Musculoskeletal Ultrasound Technical Guidelines**

## **V. Knee**

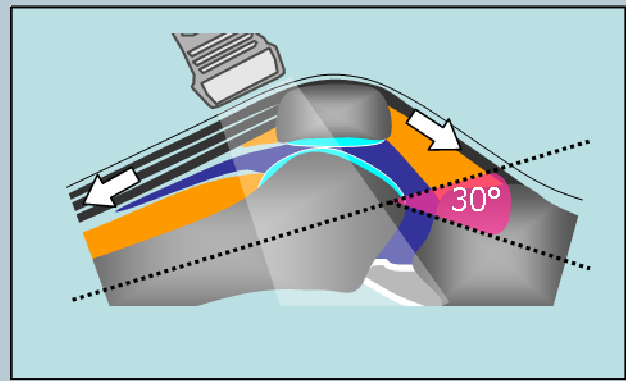
Ian Beggs, UK  
Stefano Bianchi, Switzerland  
Angel Bueno, Spain  
Michel Cohen, France  
Michel Court-Payen, Denmark  
Andrew Grainger, UK  
Franz Kainberger, Austria  
Andrea Klauser, Austria  
Carlo Martinoli, Italy  
Eugene McNally, UK  
Philip J. O'Connor, UK  
Philippe Peetrans, Belgium  
Monique Reijnierse, The Netherlands  
Philipp Rempik, Germany  
Enzo Silvestri, Italy

## Note

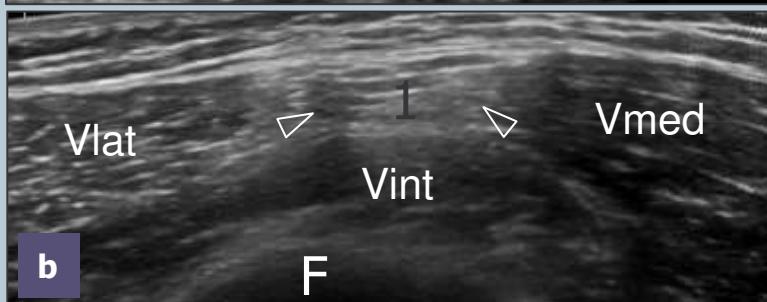
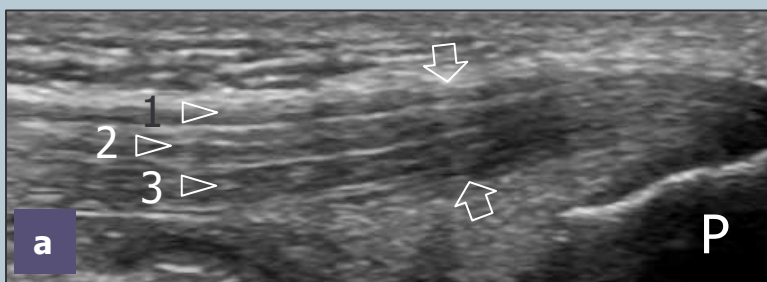
The systematic scanning technique described below is only theoretical, considering the fact that the examination of the knee is, for the most, focused to one quadrant only of the joint based on clinical findings.

### 1 ANTERIOR KNEE: quadriceps tendon

The anterior aspect of the knee is examined with the patient supine. A knee flexion of approximately 20°-30° obtained by placing a small pillow beneath the popliteal space stretches the extensor mechanism and avoids possible anisotropy related to the concave profile that the quadriceps and patellar tendons assume in full extension.



Sagittal US images obtained in the midline while keeping the distal edge of the probe over the patella display the quadriceps tendon. On long-axis and short-axis planes, observe the multilayered appearance of this tendon due to the close apposition and distal union of the three tendon layers arising from the bellies of the quadriceps femoris muscle. The ability to discriminate among the individual tendon components has practical value to allow differentiation between full-thickness (three layers involved) and partial-thickness (one/two layers involved) tears.

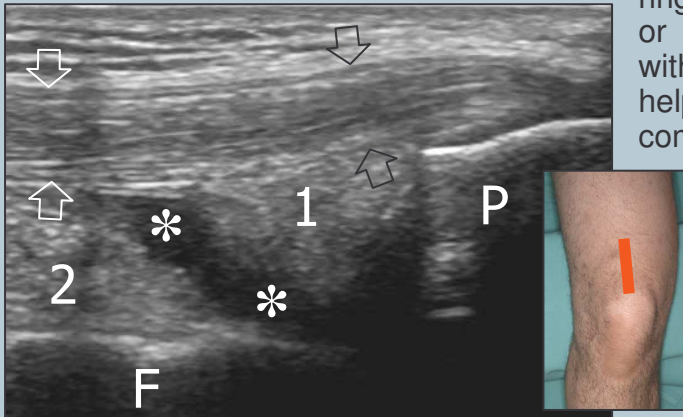


Shifting the transducer cranially on axial planes, the myotendinous junctions of the quadriceps femoris can be appreciated: the one of the rectus femoris is located at a more proximal level compared with those of the vastus muscles.

*Legend: arrows, quadriceps tendon; 1, superficial layer (from rectus femoris); 2, intermediate layer (from vastus lateralis and vastus medialis); 3, deep layer (from vastus intermedius); F, femur; P, patella; Vlat, vastus lateralis muscle; Vmed, vastus medialis muscle; Vint, vastus intermedius muscle*

## 2 suprapatellar and parapatellar joint recesses

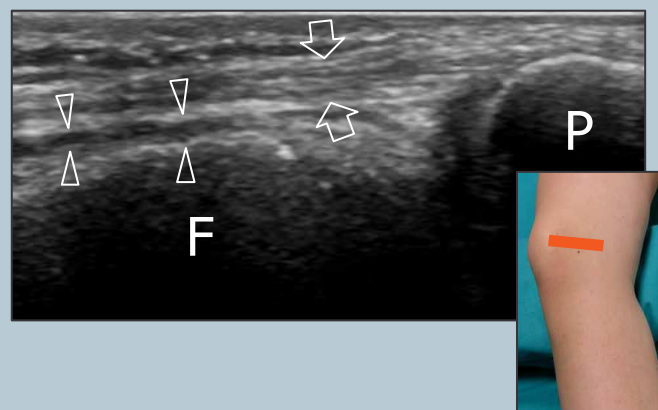
Deep to the distal third of the quadriceps tendon, the suprapatellar fat pad is found just cranially to the patella. Immediately superficial to the femur, the prefemoral fat pad appears as a large hyperechoic space. The suprapatellar synovial recess lies deep to the quadriceps tendon and the suprapatellar fat pad and superficial to the prefemoral fat; in normal states, it appears as a thin hypoechoic S-shaped space. Dynamic scanning during isometric contraction of the quadriceps or squeezing the parapatellar recesses with the non-examining hand may be helpful to detect small effusions. If needed, compression with the probe may help to differentiate effusion and synovial thickening.



*Legend:* arrows, quadriceps tendon; asterisks, suprapatellar synovial recess; 1, suprapatellar fat pad; 2, prefemoral fat pad; F, femur; P, patella

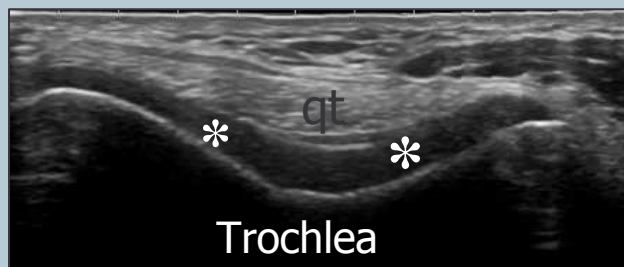
Imaging should be extended over the lateral and medial sides of the quadriceps tendon because small synovial fluid tend to accumulate in the lateral and medial parts of the suprapatellar recess (which are dependent with the patient supine) and within the parapatellar recesses.

*Legend:* arrowheads, lateral parapatellar recess; arrows, medial patellar retinaculum; F, femur; P, patella



## 3 femoral trochlea

With full knee flexion, the femoral V-shaped trochlea and the overlying articular cartilage are examined on axial planes. In this position, the quadriceps tendon is pushed anteriorly by the femoral trochlea and assumes a curved course over it.

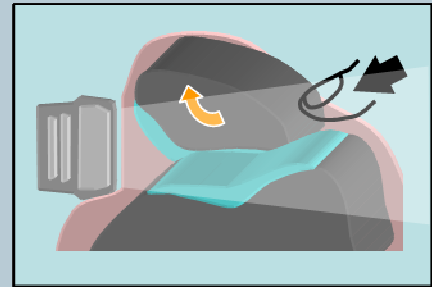


*Legend:* arrows, articular cartilage of the trochlea; qt, quadriceps tendon

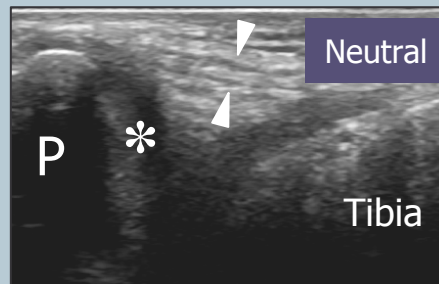


### 3 patellar retinacula and patellar medial articular facet

The medial and lateral retinacula are imaged on each side of the patella by means of axial planes: they appear as bilayered structures that cannot be discriminated from the underlying joint capsule. An attempt to evaluate the medial articular facet of the patella with US can be made by tilting and pushing the transducer internally while keeping the knee extended. The lateral facet is not visible with US.



*Legend:* arrowheads, medial patellar retinaculum; asterisks, articular cartilage of the medial facet of the patella; P, patella

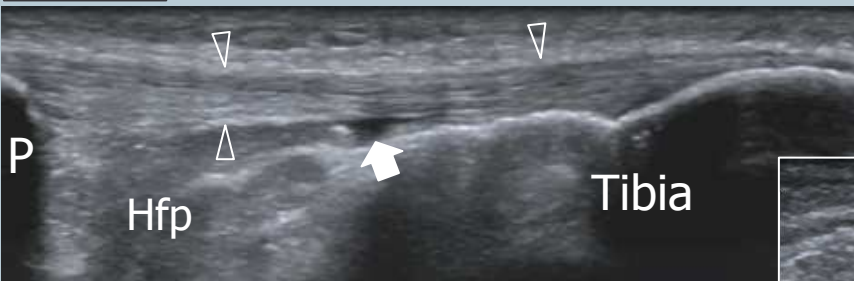


Check the prepatellar bursa, which is located over the lower pole of the patella and the proximal patellar tendon: in normal conditions, the bursa is not visible with US. Avoid excessive pressure with the probe over this bursa not to squeeze the fluid away from the field-of-view of the US image. Much gel may help to avoid excessive pressure on the bursa with the probe.

### 4 patellar tendon



With patient's positioning described at point-1, examine the patellar tendon from its cranial origin down to its distal insertion using long- and short-axis planes. Because the lower pole of the patella has a V-shaped appearance, one should be aware that the tendon inserts not only on the apex but also along the inferolateral and inferomedial edges of the bone. Short-axis US images over the proximal patellar tendon should be also performed because tendinopathy may occur out of the midline.



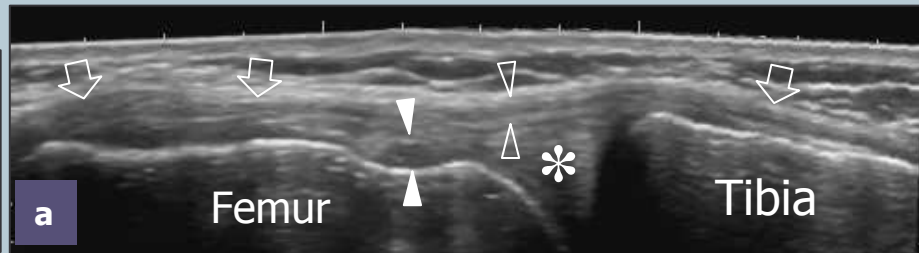
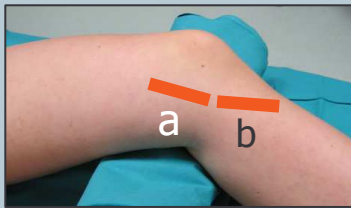
*Legend:* arrowheads, patellar tendon; arrow, deep infrapatellar bursa; Hfp, Hoffa fat pad; P, patella

Deep to the patellar tendon, look at the intracapsular Hoffa fat pad and check the deep infrapatellar bursa between the distal patellar tendon and the anterior aspect of the tibial epiphysis. Mild distension of the bursa appears as a small triangular hypoechoic area and should be regarded as normal. Normally, the superficial infrapatellar bursa is not visible.

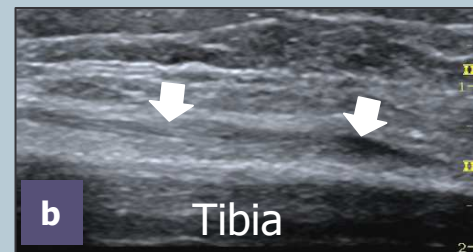


## 5 MEDIAL KNEE: medial collateral ligament and pes anserinus tendons

For examination of the medial knee, the patient is asked to rotate the leg externally while maintaining 20°-30° of knee flexion. Place the transducer obliquely-oriented over the long-axis of the medial collateral ligament. Care should be taken to examine the entire length of this ligament. Dynamic scanning during valgus stress can improve the assessment of its integrity. Check the soft-tissues immediately superficial to the base of the medial meniscus.



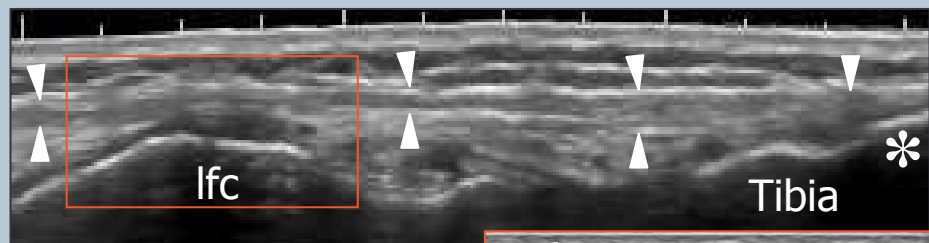
Follow the profile of the medial collateral ligament distally and then rotate the transducer forward to image the tendons of the pes anserinus complex (sartorius, gracilis and semitendinosus) in their long-axis. These tendons are closely apposed and cannot be separated at the level of the insertion on the tibia (small convave area).



*Legend:* void arrows, medial collateral ligament; asterisk, medial meniscus; void arrowheads, superficial portion of medial collateral ligament; white arrowheads, meniscomfemoral ligament; white arrows, pes anserinus complex insertion

## 6 LATERAL KNEE: iliotibial band

For examination of the lateral knee, rotate the patient's leg internally while maintaining 20°-30° of knee flexion. Check the iliotibial band on its long-axis down to reach the Gerdy's tubercle. If doubts exist on whether the probe is correctly oriented, consider that the iliotibial band is located between the anterior and middle third of the lateral aspect of the knee and oriented along the major axis of the thigh. Check the soft-tissues immediately superficial to the base of the lateral meniscus: when a meniscal cyst is suspected, examine the knee in forceful flexion to produce bulging of the cyst outside the joint space thus improving its detection.

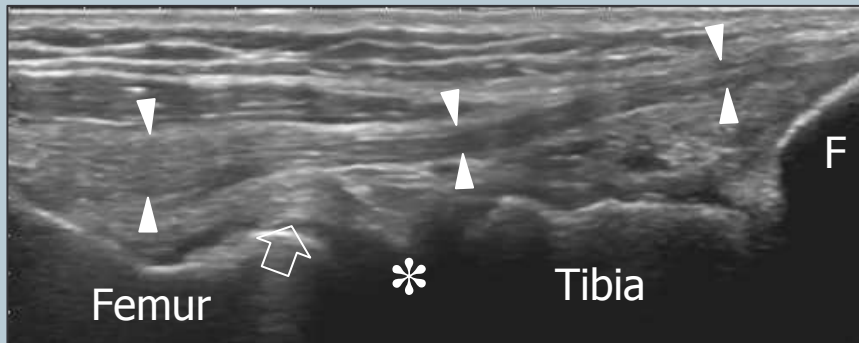


*Legend:* arrowheads, iliotibial band; asterisk, Gerdy's tubercle; lfc, lateral femoral condyle



## 7 lateral collateral ligament

With extended knee, place the lower edge of the probe on the peroneal head and then rotate its upper edge anteriorly until the lateral collateral ligament appears as more elongated as possible in the US image. Just deep to the proximal part of the lateral collateral ligament, the popliteal tendon can be imaged in its bony groove. Transverse US planes may help to assess the relationship of the lateral collateral ligament with the more posterior biceps femoris tendon.

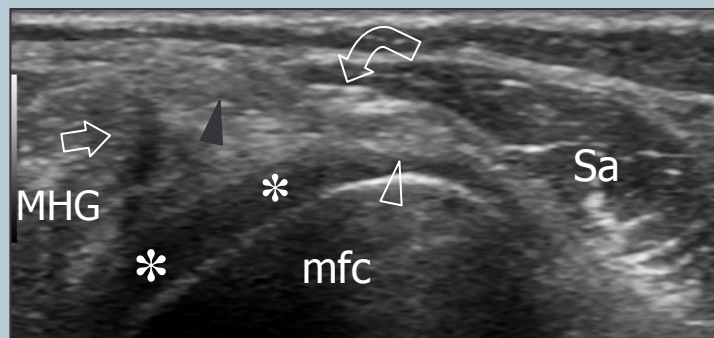
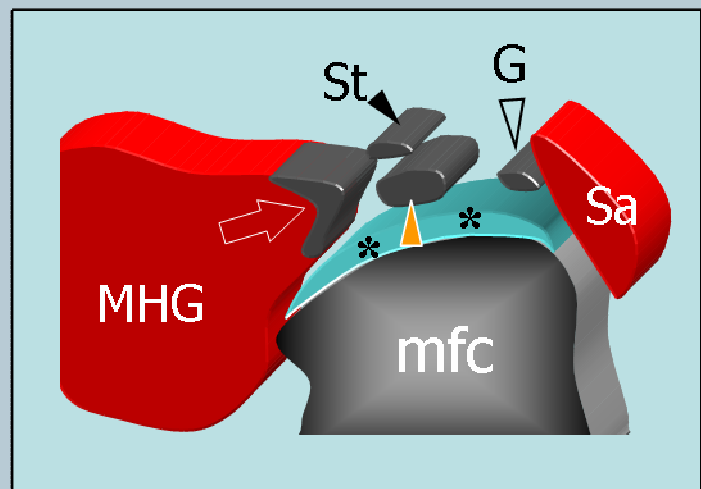


Legend: arrow, popliteal tendon; arrowheads, lateral collateral ligament; asterisk, lateral meniscus; F, fibular head

Check the superior tibiofibular joint for joint effusion and paraarticular ganglia by means of axial and coronal US images obtained over the anterior aspect of the fibular head.

## 8 POSTERIOR KNEE: medial tendons

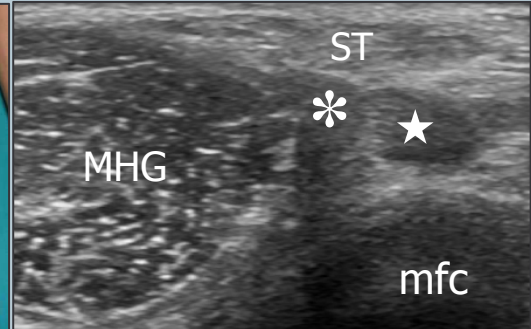
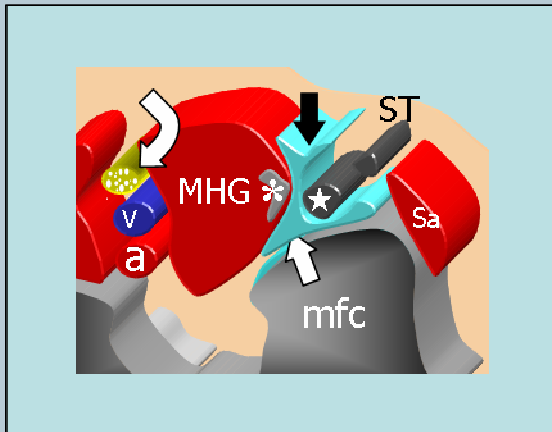
For examination of the posterior knee, the patient is asked to lie prone with the knee extended. Scanning the posteromedial knee on transverse planes demonstrates, from medial to lateral, the sartorius – made, at this level, of muscle fibers – the gracilis tendon and the semitendinosus tendon that is located behind the semimembranosus tendon.



Legend: asterisks, articular cartilage of the medial femoral condyle; black arrowhead, semitendinosus tendon; curved arrow, saphenous nerve; mfc, medial femoral condyle; MHG, medial head of gastrocnemius; Sa, sartorius muscle; void arrow, tendon of the medial head of gastrocnemius;

## 9 semimembranosus-gastrocnemius bursa

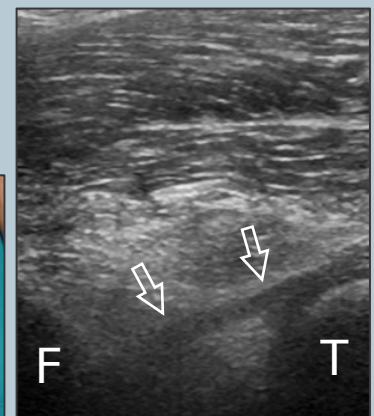
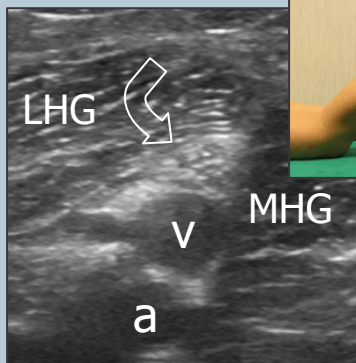
Check the semimembranosus-gastrocnemius bursa between the semimembranosus tendon medially and the medial head of the gastrocnemius laterally using axial planes and the cartilage of the posterior aspect of the medial femoral condyle using sagittal planes.



*Legend:* a, popliteal artery; asterisk, tendon of the medial head of gastrocnemius; curved arrow, tibial nerve; mfc, medial femoral condyle; MHG, medial head of gastrocnemius; star, semimembranosus tendon; Sa, sartorius muscle; ST, semitendinosus tendon; straight arrows, semimembranosus-gastrocnemius bursa; v, popliteal vein

## 10 popliteal neurovascular bundle and intercondylar fossa

In the popliteal fossa, sweep the probe up and down over the popliteal neurovascular bundle to demonstrate the popliteal artery (deep), the popliteal vein (intermediate) and the tibial nerve (superficial) which are aligned on an oblique sagittal plane. Because the patient is prone, the popliteal vein tends to collapse: a small elevation of the leg from the examination bed, which is obtained while flexing the knee, causes filling of the popliteal vein and enhances its detection.

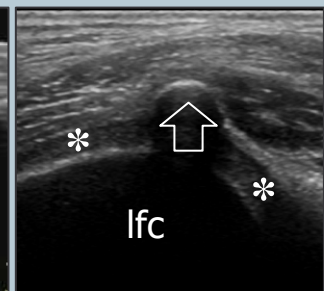
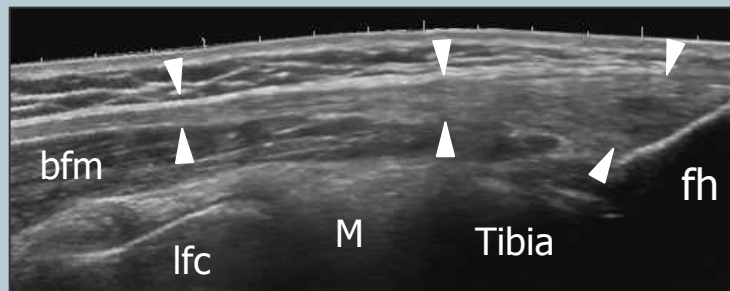


*Legend:* a, popliteal artery; curved arrow, tibial nerve; F, femur; LHG, lateral head of gastrocnemius; MHG, medial head of gastrocnemius; T, tibia; straight arrows, posterior cruciate ligament; v, popliteal vein

More deeply, in the intercondylar fossa, examine the mid-distal portion of the posterior cruciate ligament in its long-axis using oblique sagittal planes, with the proximal end of the probe rotated slightly medially in the direction of the medial femoral condyle. If an anterior cruciate ligament tear is suspected, check the lateral aspect of the intercondylar fossa for a hematoma (indirect sign).

## 11 posterolateral corner and biceps femoris

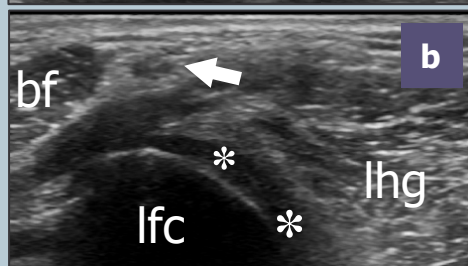
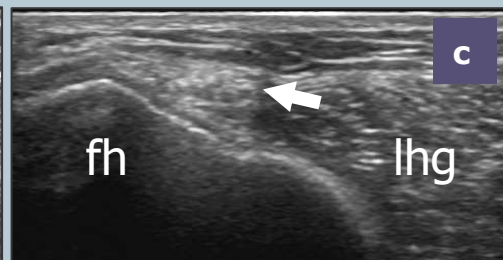
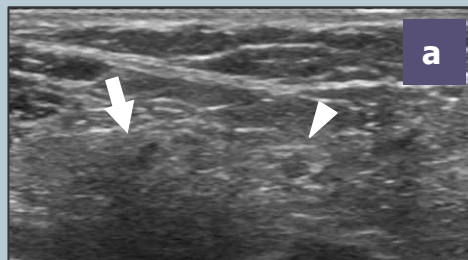
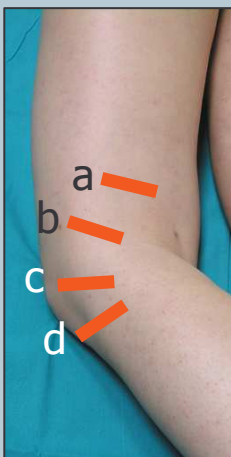
Moving to the posterolateral aspect of the knee, examine the biceps femoris muscle and tendon by means of long- and short-axis planes. Proximal images must include careful evaluation of the myotendinous junction of the two heads of the biceps femoris muscle because this is a common site of sport-related tears. The biceps femoris tendon can be followed straight downward from its origin to the fibular head. A small sesamoid - the fabella - can be occasionally seen in the tendon of the lateral head of the gastrocnemius. Check the cartilage of the posterior aspect of the lateral femoral condyle using sagittal planes.



*Legend:* arrow, fabella; arrowheads, biceps femoris tendon; asterisks, articular cartilage of lateral femoral condyle; bfm, biceps femoris muscle; M, lateral meniscus; fh, fibular head; lfc, lateral femoral condyle

## 12 peroneal nerve

From the position described at point-10, shift the probe up over the tibial nerve to find the origin of the common peroneal nerve from the sciatic nerve. Follow the common peroneal nerve in its short-axis throughout the lateral region of the popliteal space down to reach the fibular head and neck. The peroneal nerve is found posteriorly to the biceps femoris. Note the divisional (superficial and deep) branches of the peroneal nerve that wind the fibula passing deep to the peroneus longus attachment.



*Legend:* arrow, peroneal nerve; arrowhead, tibial nerve; asterisks, articular cartilage of lateral femoral condyle; bf, biceps femoris muscle; fh, fibular head; fn, fibular neck; lhg, lateral head of gastrocnemius; lfc, lateral femoral condyle; pl, peroneus longus muscle





**European Society of  
MusculoSkeletal Radiology**

# **Musculoskeletal Ultrasound Technical Guidelines**

## **IV. Hip**

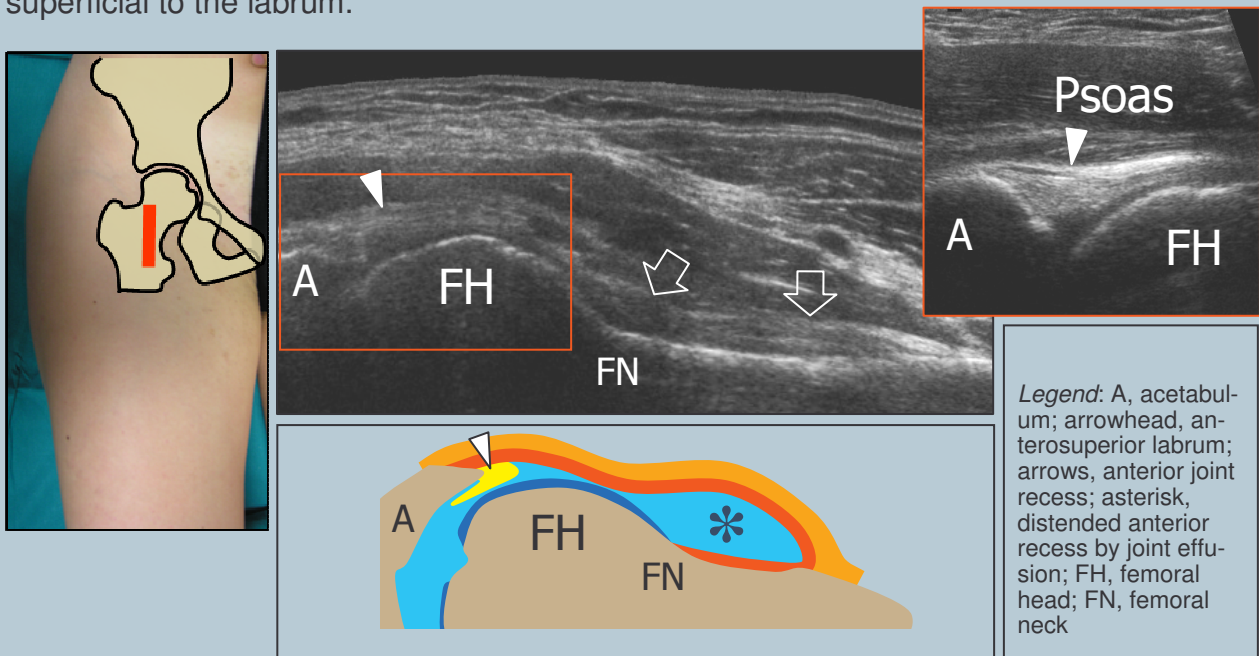
Ian Beggs, UK  
Stefano Bianchi, Switzerland  
Angel Bueno, Spain  
Michel Cohen, France  
Michel Court-Payen, Denmark  
Andrew Grainger, UK  
Franz Kainberger, Austria  
Andrea Klauser, Austria  
Carlo Martinoli, Italy  
Eugene McNally, UK  
Philip J. O'Connor, UK  
Philippe Peetrons, Belgium  
Monique Reijnierse, The Netherlands  
Philipp Rempik, Germany  
Enzo Silvestri, Italy

## Note

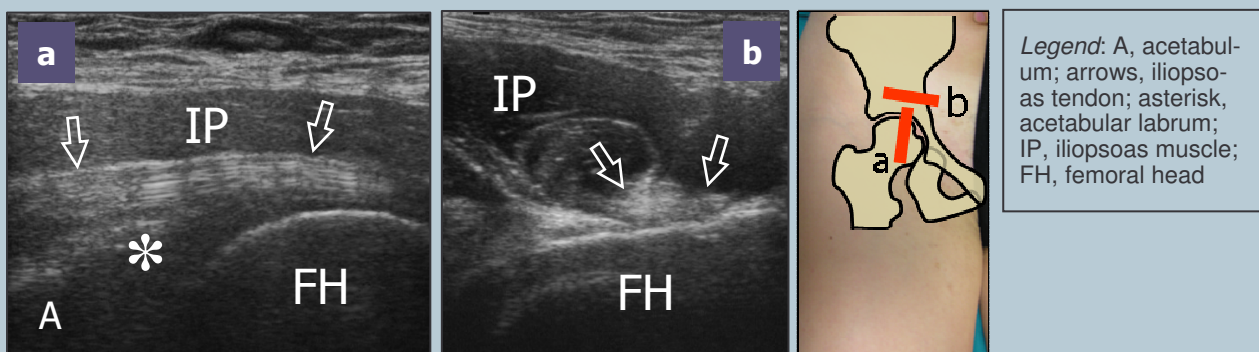
The systematic scanning technique described below is only theoretical, considering the fact that the examination of the hip is, for the most, focused to one quadrant only of the joint based on clinical findings.

### 1 ANTERIOR HIP: anterior joint recess and iliopsoas tendon

With the patient supine, place the transducer in an oblique longitudinal plane over the femoral neck to examine the anterior synovial recess, using the femoral head as a landmark. In obese patients, lower frequency probes may help the examination. Cranial to the anterior recess, the fibrocartilaginous anterior glenoid labrum of the acetabulum can be detected as a homogeneously hyperechoic triangular structure (same appearance as the knee meniscus). Look at the iliofemoral ligament that can be appreciated superficial to the labrum.

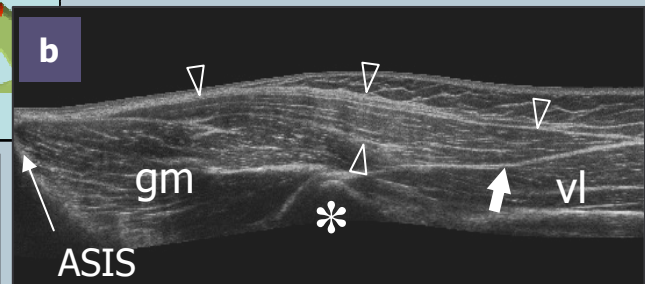
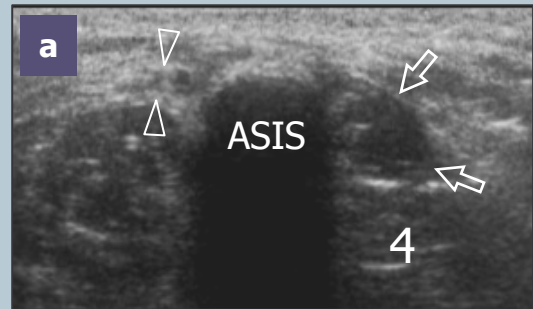
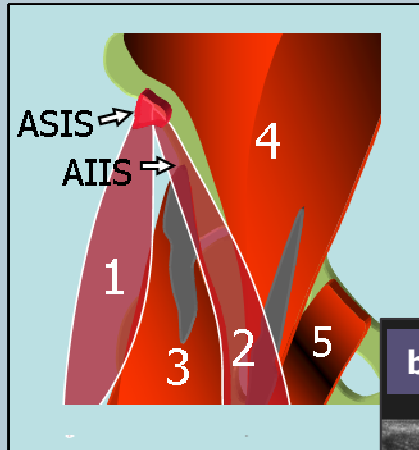
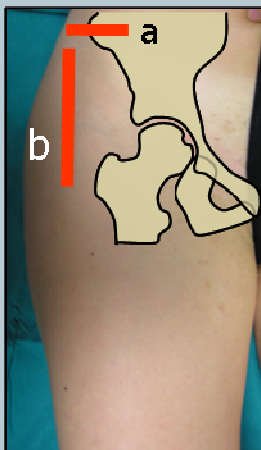


Over the joint space and the femoral head, the iliopsoas muscle is identified lateral to the femoral neurovascular bundle. The iliopsoas tendon is found in a deep eccentric position within the posterior and medial part of the muscle belly and lies over the iliopectineal eminence. The iliopsoas bursa lies between the tendon and the anterior capsule of the hip joint: in normal states, it is collapsed and cannot be detected with US.

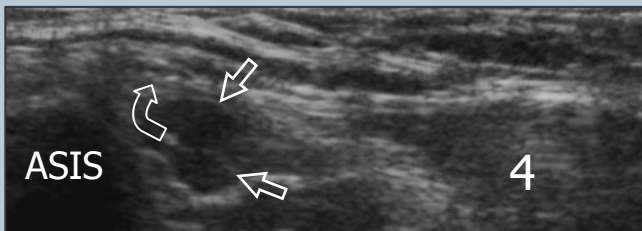


## 2 tensor fasciae latae and sartorius

Place the transducer in the axial plane over the anterior superior iliac spine. The short tendons of the sartorius (medial) and the tensor fasciae latae (lateral) are then visualized by means of sagittal planes. Shifting the probe down over the muscle bellies, the sartorius can be seen directing medially to reach the medial thigh over the rectus femoris muscle, whereas the tensor fasciae latae proceeds laterally and caudally to insert into the anterior border of the fascia lata, superficial to the vastus lateralis.



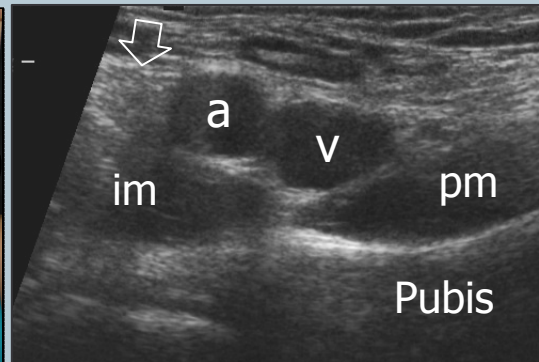
**Legend:** arrowheads and 1, tensor fasciae latae muscle; AIIS, anteroinferior iliac spine; ASIS, anterosuperior iliac spine; asterisk, greater trochanter; curved arrow, lateral femoral cutaneous nerve; gm, gluteus medius muscle; 3, rectus femoris muscle; 4, iliopsoas muscle; 5, pectineus muscle; void arrows and 2, sartorius muscle; white arrow, insertion of tensor fasciae latae; vl, vastus lateralis muscle



Just medial to the attachment of the inguinal ligament into the anterior superior iliac spine, look at the lateral femoral cutaneous nerve. Shifting the transducer up on axial planes, image the abdominal portion of the psoas and the iliacus muscles which lie internally to the iliac wing.

## 3 femoral neurovascular bundle

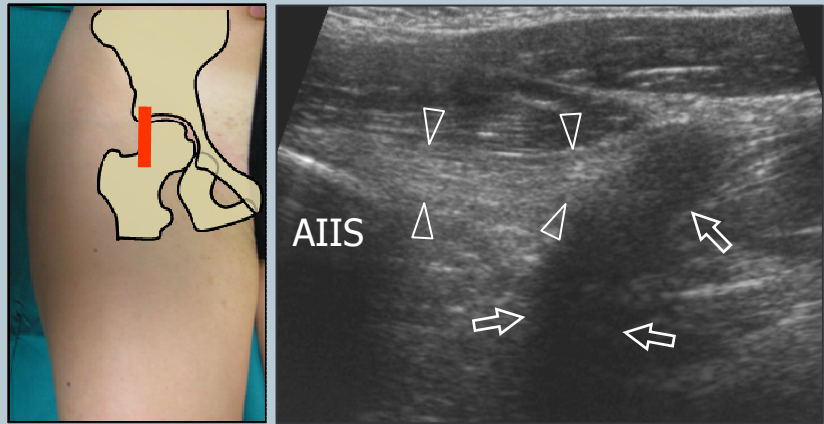
Medial to the iliopsoas muscle and tendon, look at the femoral nerve (lateral), the common femoral artery and the common femoral vein (medial). The vein is larger than the artery and is compressible with the probe. Check for enlarged lymph nodes. Further medially, the pectineus muscle is seen over the pubis.



**Legend:** a, femoral artery; arrow, femoral nerve; im, iliacus muscle; pm, pectineus muscle; v, femoral vein

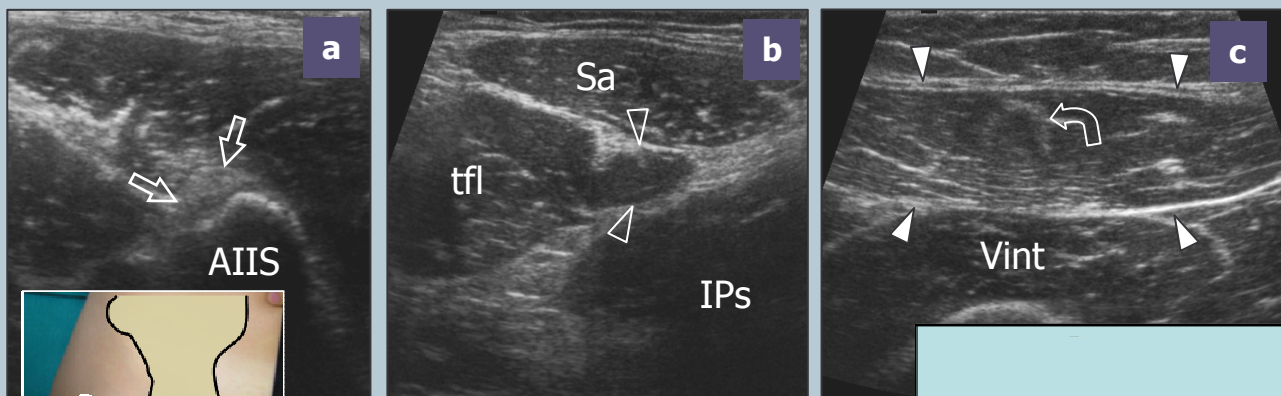
## 4 rectus femoris

Place the transducer over the anterior inferior iliac spine to examine the direct tendon of the rectus femoris. On long-axis planes, note the posterior acoustic shadowing that underlies the direct tendon related to changes in orientation of tendon fibers at the union of the direct and indirect tendons.



*Legend:* AIIS, anteroinferior iliac spine; arrowheads, direct tendon of the rectus femoris muscle; arrows, indirect tendon of the rectus femoris muscle

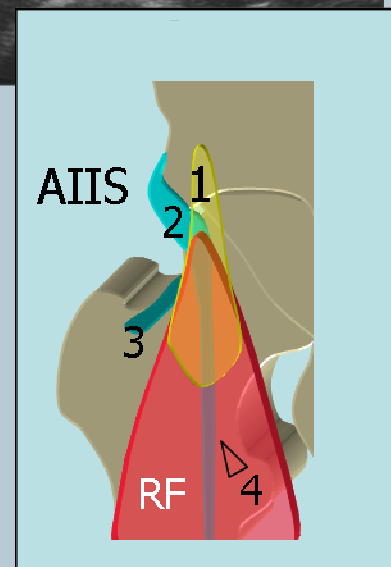
Shifting the transducer downward, transverse planes can demonstrate the myotendinous junction of the rectus femoris with its muscle fibers that arise from the lateral aspect of the tendon. More distally, the muscle belly is seen progressively enlarging between the tensor fasciae latae and the sartorius.



*Legend:* AIIS, anteroinferior iliac spine; arrows, direct tendon of the rectus femoris muscle; curved arrow, central aponeurosis; IPs, iliopsoas muscle; Sa, sartorius muscle; tfl, tensor fasciae latae muscle; Vint, vastus intermedius muscle; void arrowheads, proximal myotendinous junction of the rectus femoris muscle; white arrowheads, rectus femoris muscle

In the proximal rectus femoris muscle, the central aponeurosis is the distal continuity of the indirect tendon, whereas the superficial aponeurosis arises from the direct tendon.

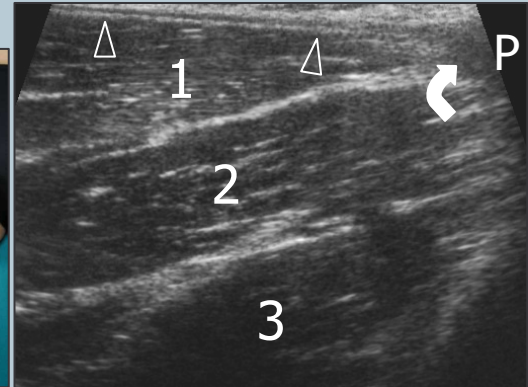
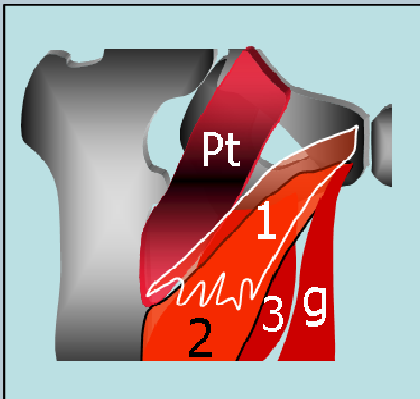
*Legend:* AIIS, anteroinferior iliac spine; 1, direct tendon; 2, indirect tendon; 3, reflected tendon; 4, central aponeurosis; RF, rectus femoris muscle





## 5 MEDIAL HIP: adductors

For examination of the medial hip, place the patient with the thigh abducted and externally rotated and the knee bent. Examine the insertion of the iliopsoas tendon on the lesser trochanter using long-axis planes. Placing the probe over the bulk of the adductors, three muscle layers are recognized on axial planes: the superficial refers to the adductor longus (lateral) and the gracilis (medial), the intermediate to the adductor brevis and the deep to the adductor magnus. To image the adductor insertion, scan over the long-axis of these muscles up to reach the pubis. The insertion of the adductor longus tendon is seen with its triangular hypoechoic shape.



*Legend:* arrowheads, adductor longus tendon; curved arrow, adductor longus insertion; 1, adductor longus muscle; 2 adductor brevis muscle; 3, adductor magnus muscle; g, gracilis muscle; P, pubis; Pt, pectineus muscle

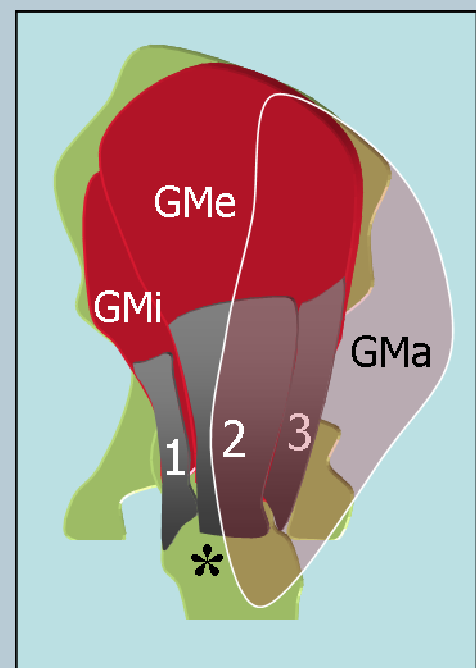
From a transverse plane on the pubis, shift the probe laterally and perform an oblique longitudinal scan over the conjoint tendon of transversus abdominis and internal oblique. Further medially, the anterior aspect of the symphysis pubis may be seen.

## 6 LATERAL HIP: abductors

The US examination of the lateral hip is performed by asking the patient to lie on the opposite hip assuming an oblique lateral or true lateral position. Transverse and longitudinal US planes obtained cranial to the greater trochanter show the gluteus medius (superficial) and gluteus minimus (deep) muscles. To recognize them, the tensor fasciae latae can be used as a landmark: shifting the transducer posterior to it, the anterior margin of both muscles appears.

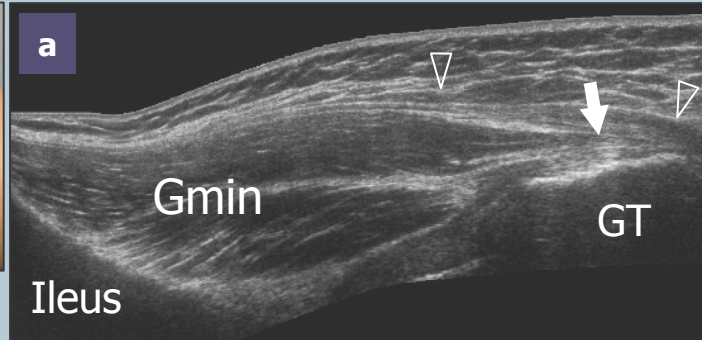
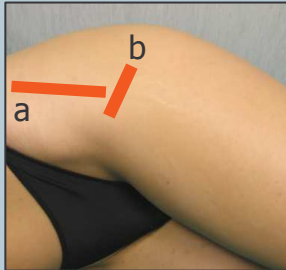
In alternative, obtain posterior US images over the anterior portion of the gluteus maximus: moving the transducer anterior to this muscle, the posterior margin of the gluteus medius appears. The fascia lata lies over the lateral aspect of the gluteus medius and the greater trochanter.

*Legend:* asterisk, greater trochanter; 1, gluteus minimus tendon; 2, gluteus medius (anterior tendon); 3, gluteus medius (posterior tendon); GMi, gluteus minimus muscle; GMa, gluteus maximus muscle; GMe, gluteus medius muscle



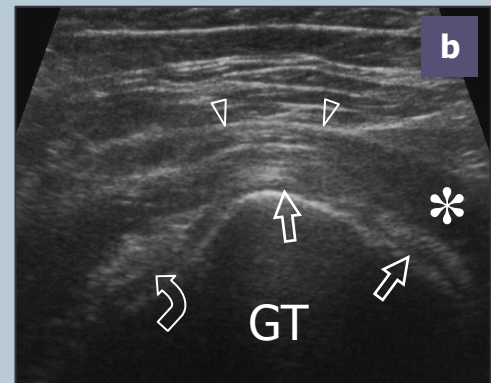
## 7 gluteus minimus, gluteus medius and fascia lata

Moving the probe down to reach the greater trochanter, the gluteus minimus tendon is seen as an anterior structure that arises from the deep aspect of the muscle and inserts into the anterior facet of the greater trochanter.



*Legend:* asterisk, gluteus maximus muscle; curved arrow, gluteus minimus tendon; Gmin, gluteus minimus muscle; GT, greater trochanter; void arrow, gluteus medius tendon; white arrow, gluteus minimus tendon; arrowheads, fascia lata

Long-axis and short-axis US images obtained over the lateral facet of the greater trochanter demonstrate the gluteus medius tendon as a curvilinear fibrillar band. Shifting the probe posteriorly, the anterior portion of the gluteus maximus can be seen covering the posterior part of the tendon of the gluteus medius. Coronal planes demonstrate the fascia lata which appears as a superficial hyperechoic band that, from cranial to caudal, overlies the gluteus medius muscle, the gluteus medius tendon and the greater trochanter.

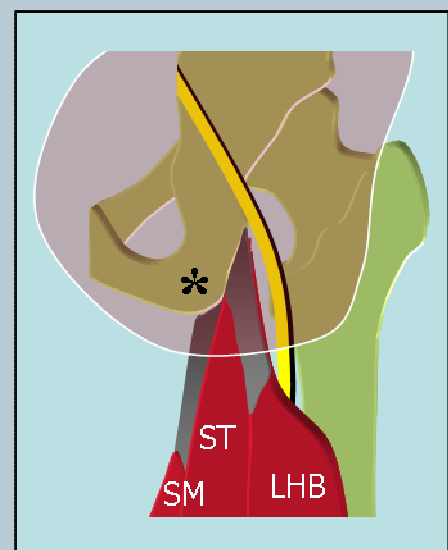


Due to a too small amount of fluid content, the bursae around the greater trochanter are not visible with US in normal conditions.

## 8 POSTERIOR HIP: hamstrings

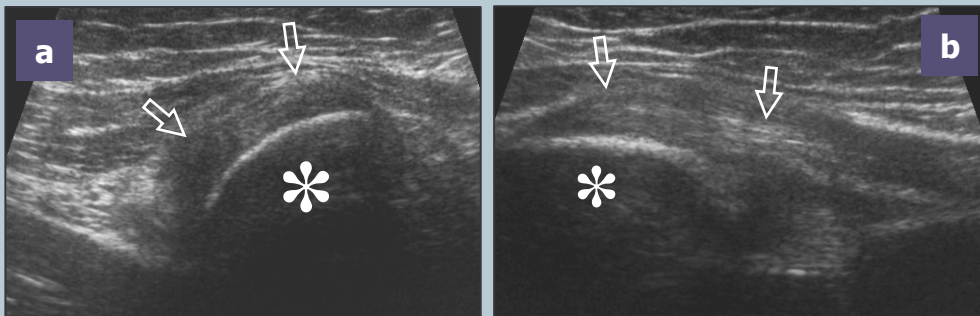
For examination of the posterior hip, the patient lies prone with the feet hanging out of the bed. Lower US frequencies may be required to image thick thighs or obese patients. The gluteus maximus muscle is first evaluated by means of transverse and coronal oblique planes oriented according to its long- and short-axis.

*Legend:* asterisk, ischiatic tuberosity; Gmax, gluteus maximus muscle; SM, semimembranosus; ST, semitendinosus; LHB, long head of the biceps femoris

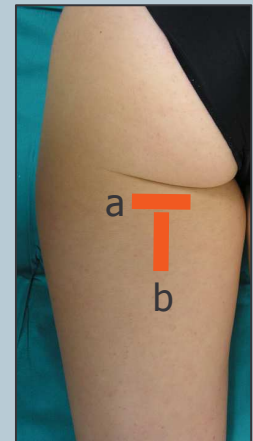


## 9 hamstrings and sciatic nerve

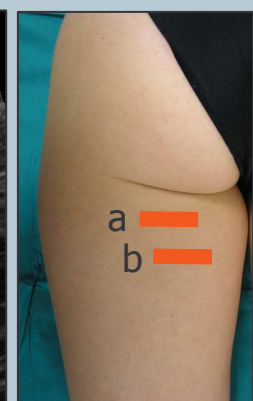
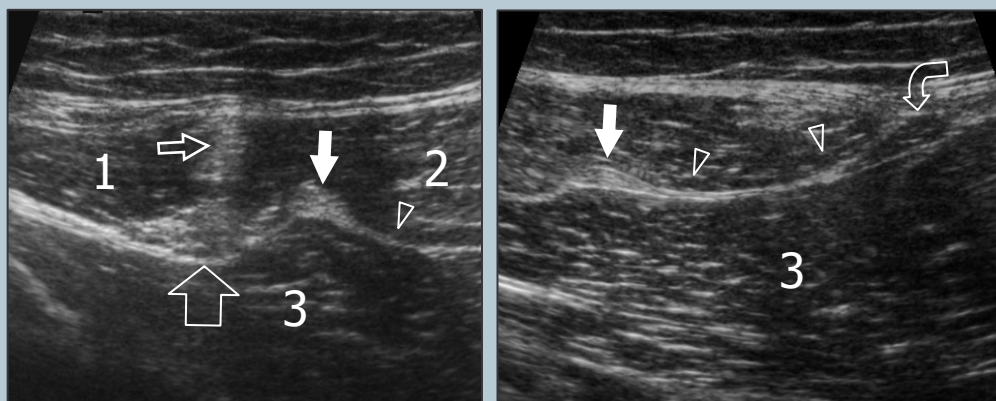
Posterior axial planes are the most useful to recognize the proximal origin of the ischiocrural (semimembranosus, semitendinosus, long head of the biceps femoris) muscles. The ischial tuberosity is the main landmark: once detected, the most cranial portion of the ischiocrural tendons can be demonstrated as they insert on its lateral aspect. At this level, the semimembranosus tendon and the conjoined tendon of the semitendinosus and the long head of the biceps femoris cannot be separated. Lateral to them, the sciatic nerve is seen as a flattened structure with fascicular echotexture emerging from under the piriformis muscle.



*Legend:* asterisk, ischial tuberosity; arrows, common tendon origin of the semitendinosus-long head of biceps femoris



Shifting the probe downward on axial planes, the conjoined tendon of semitendinosus and biceps femoris can be distinguished from the tendon of semimembranosus due to its more superficial and lateral position. The conjoined tendon of the semitendinosus and biceps femoris appears as a sagittal hyperechoic image separating the muscle bellies of the semitendinosus (medial) and the biceps (lateral). The semimembranosus has a large aponeurosis connected to the medial side of the tendon: its muscle belly arises from the medial end of this aponeurosis.



*Legend:* large void arrow, sciatic nerve; narrow void arrow, conjoined tendon of the semitendinosus-long head of the biceps; 1, long-head of the biceps muscle; 2, semitendinosus muscle; 3, adductor magnus muscle; white arrow, semimembranosus tendon; arrowheads, semimembranosus aponeurosis; curved arrow, semimembranosus muscle belly



**European Society of  
MusculoSkeletal Radiology**

# **Musculoskeletal Ultrasound Technical Guidelines**

## **VI. Ankle**

Ian Beggs, UK  
Stefano Bianchi, Switzerland  
Angel Bueno, Spain  
Michel Cohen, France  
Michel Court-Payen, Denmark  
Andrew Grainger, UK  
Franz Kainberger, Austria  
Andrea Klauser, Austria  
Carlo Martinoli, Italy  
Eugene McNally, UK  
Philip J. O'Connor, UK  
Philippe Peetrans, Belgium  
Monique Reijnierse, The Netherlands  
Philipp Rempik, Germany  
Enzo Silvestri, Italy

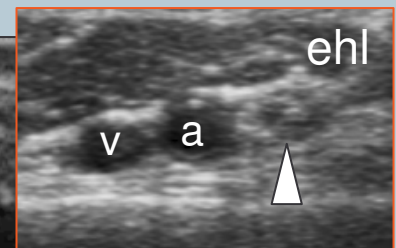
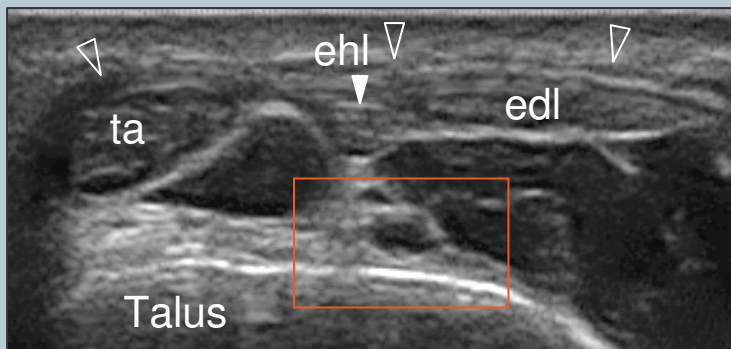


## Note

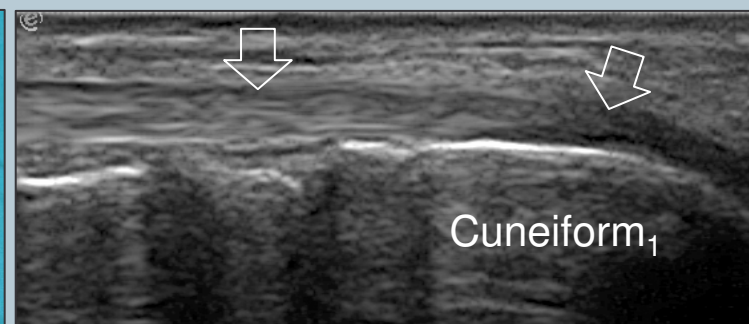
The systematic scanning technique described below is only theoretical, considering the fact that the examination of the ankle is, for the most, focused to one (or a few) aspect(s) only of the joint based on clinical findings.

## 1 ANTERIOR ANKLE: extensor tendons

Patient seated on the examination bed with the knee flexed 45° so that the plantar surface of the foot lies flat on the table. Alternatively, the patient may lie supine with the foot free to allow manipulation by the examiner during scanning. Place the transducer in the axial plane and sweep it up and down over the dorsum of the ankle to examine the tibialis anterior, extensor hallucis longus and extensor digitorum longus. These tendons must be examined in their full length starting from the myotendinous junction. Look at the tibialis anterior artery and the adjacent deep peroneal nerve.



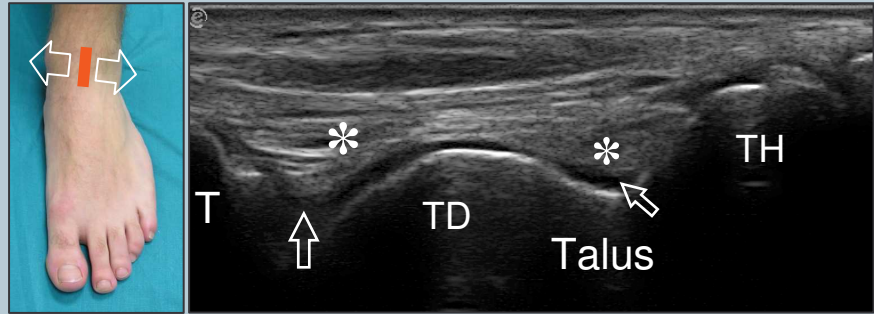
Be sure to examine the superior extensor retinaculum and the insertion of the tibialis anterior tendon, which lies distally and medially. Follow the tibialis anterior tendon up to reach its insertion onto the first cuneiform.



*Legend:* a, anterior tibial artery; edl, extensor digitorum longus tendon; ehl, extensor hallucis longus tendon; ta, tibialis anterior tendon; void arrows, distal tibialis anterior tendon; v, anterior tibial vein; void arrowheads, superior extensor retinaculum; white arrowhead, deep peroneal nerve

## 2 anterior recess of the ankle joint

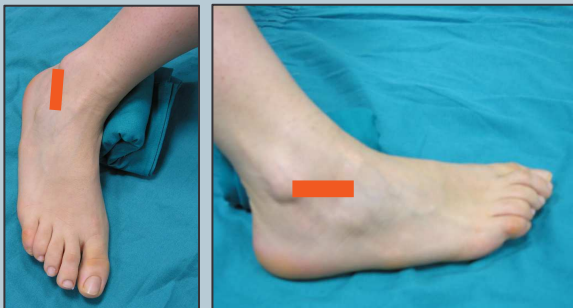
Place the transducer in the mid longitudinal plane over the dorsum of the ankle to examine the anterior recess of the tibiotalar joint. Fluid may be shifted away from this recess using excessive plantar flexion. 60%-70% of the talar dome can be easily assessed by moving the probe medially and laterally.



*Legend:* asterisks, anterior fat pad; arrows, anterior recess of the tibiotalar joint; T, tibia; TD, talar dome; TH, talar head

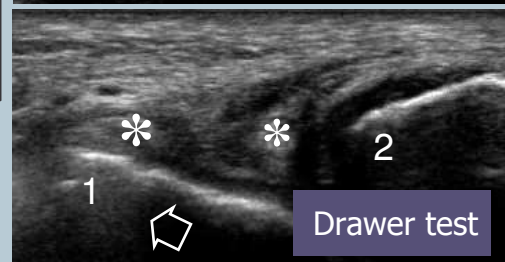
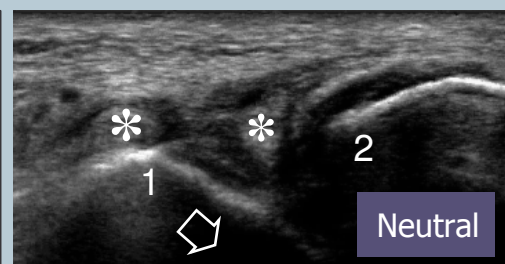
## 3 anterior talofibular ligament

From the position described at point-1, roll the forefoot slightly internally (inversion) to stretch the lateral ligaments. A small pillow under the medial malleolus may help to improve the contact between transducer and skin over the lateral ankle. Place the transducer parallel to the examination bed placing its posterior edge over the distal lateral malleolus to image the anterior talofibular ligament.



*Legend:* LM, lateral malleolus; void arrowheads, anterior talofibular ligament

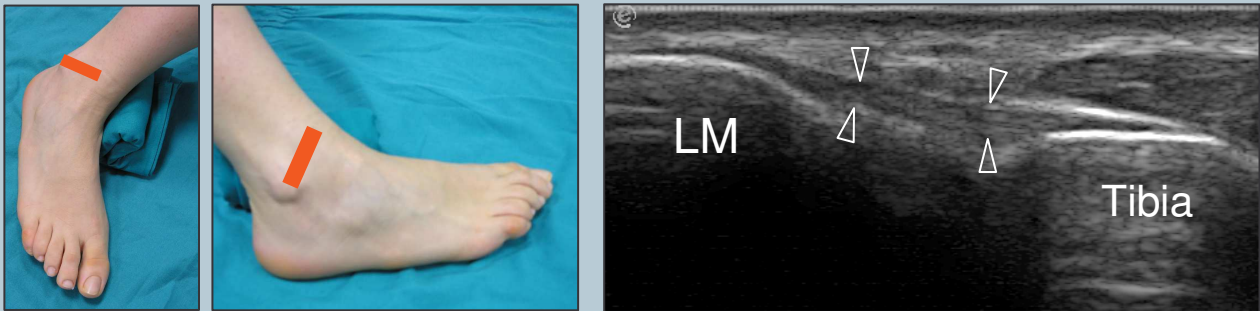
When distinguishing a partial from a complete tear is difficult, perform a sonographic anterior drawer test by placing the patient prone with the foot hanging over the edge of the examination table while pulling the forefoot anteriorly when in plantar flexion and inversion. When the ligament is torn, the anterior shift of the talus against the tibia will open the gap in the substance of the ligament.



*Legend:* Anterior drawer test in patient with anterior talofibular ligament tear. asterisks, ligament stumps; arrow, talar shift; 1, talar landmark; 2, fibular landmark

## 4 anterior tibiofibular ligament

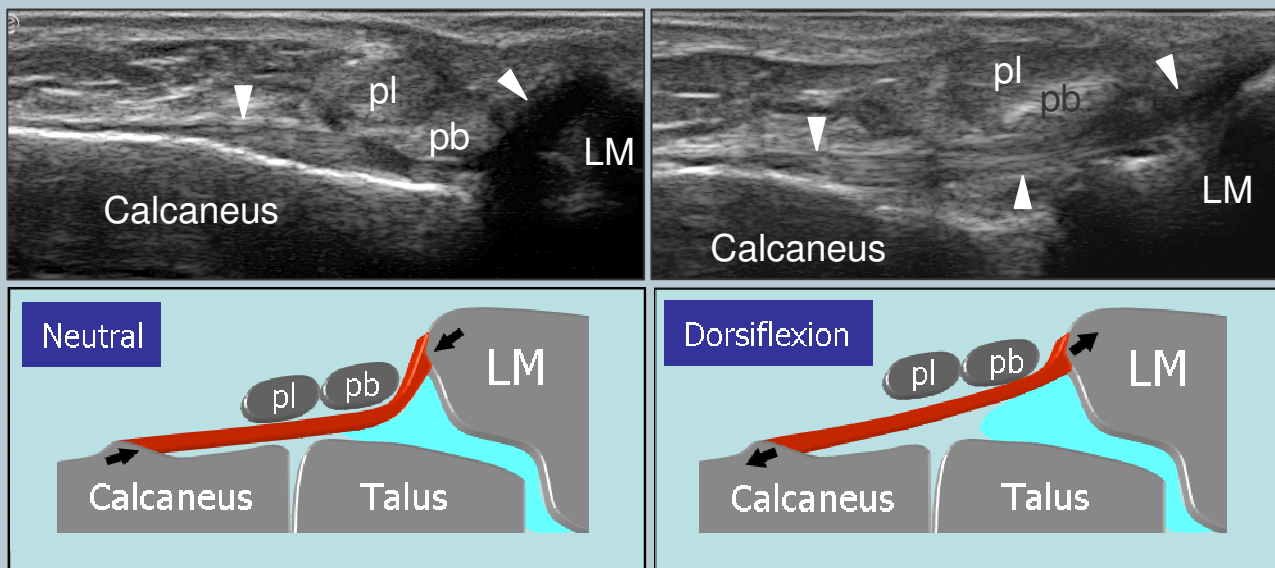
From the position described at point-3 (first sentence), keep the posterior edge of the transducer on the lateral malleolus and rotate its anterior edge upwards to image the anterior tibiofibular ligament. The transducer will pass over a part of the talar cartilage, which lies in between the anterior talofibular ligament and the anterior tibiofibular ligament.



Legend: arrowheads, anterior tibiofibular ligament; LM, lateral malleolus

## 5 calcaneofibular ligament

With the ankle lying on its medial aspect, place the transducer in an oblique coronal plane with its superior edge over the tip of the lateral malleolus and its inferior margin slightly posterior to it, towards the heel, while the foot is dorsiflexed to image the calcaneofibular ligament.



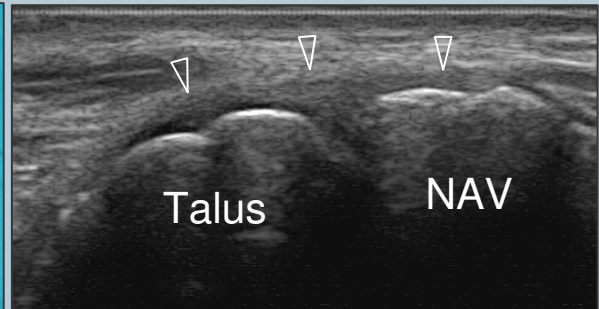
Legend: arrowheads, calcaneofibular ligament; LM, lateral malleolus; pb, peroneus brevis tendon; pl, peroneus longus tendon



## 6 dorsal midtarsal ligaments

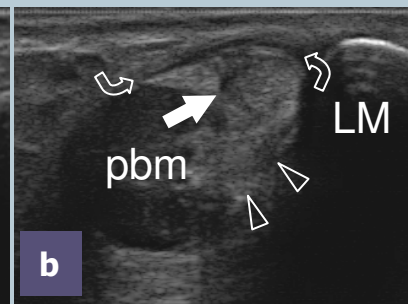
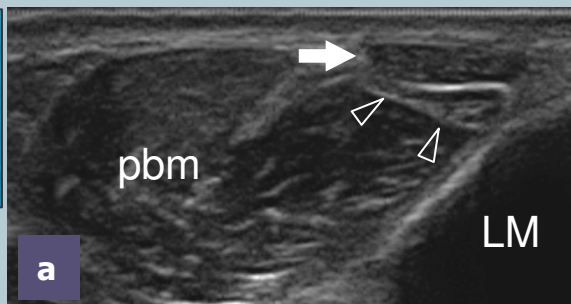
Look at the following midtarsal ligaments: dorsal talonavicular, dorsal calcaneocuboid and calcaneo-cuboido-navicular ligament (avulsion of the anterolateral tubercle of the calcaneus).

*Legend:* arrowheads, dorsal talonavicular ligament; NAV, navicular bone



## 7 LATERAL ANKLE: peroneal tendons

Behind the lateral malleolus, place the transducer over the peroneal tendons to examine them in their short-axis (long-axis planes are of limited utility). Because these tendons arc around the malleolus, tilt the transducer to maintain the US beam perpendicular to them and avoid anisotropy as scanning progresses. Continue to follow these tendons upwards for approximately 5 cm and downwards through the inframalleolar region.

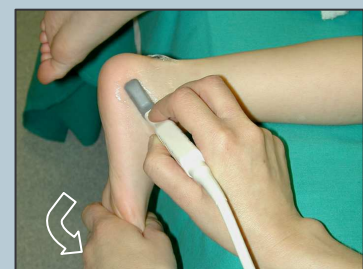


Check them at the level of the peroneal tubercle of calcaneus, and the peroneus longus down to the area where the os peroneum can be found. Follow the peroneus brevis until the base of the 5th metatarsal. Look at the superior and inferior peroneal retinacula.



*Legend:* arrowheads, peroneus brevis tendon; curved arrows, superior extensor retinaculum; LM, lateral malleolus; pbm, peroneus brevis muscle; void arrow, peroneal tubercle; white arrow, peroneus longus tendon

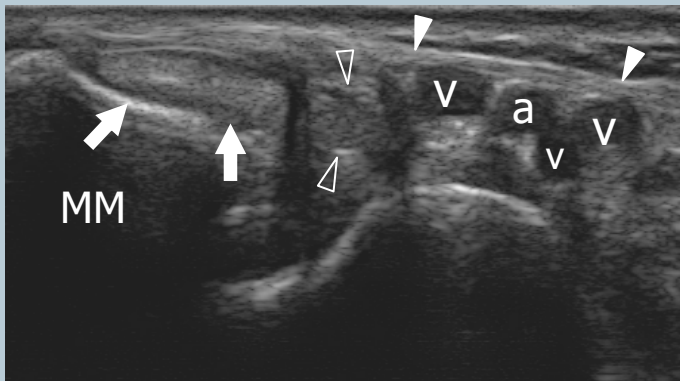
When intermittent subluxation of the peroneals is suspected clinically, perform scanning at rest and during dorsiflexion and eversion of the foot against resistance, placing the transducer in a transverse plane over them, at the level of the lateral malleolus. Stress eversion can be done while pushing with the examiner's free hand on the forefoot of the patient, to see subtle subluxation or distension of the superior retinaculum.





## 8 MEDIAL ANKLE: tibialis posterior and flexor digitorum longus tendons

For examination of the medial ankle, the patient is seated with the plantar surface of the foot rolled internally or in a “frog-leg” position. Alternatively, the patient may lie supine with the foot rotated slightly laterally. A small pillow under the lateral malleolus may help to improve the contact between transducer and skin over the medial ankle. The examination of tendons is performed first.

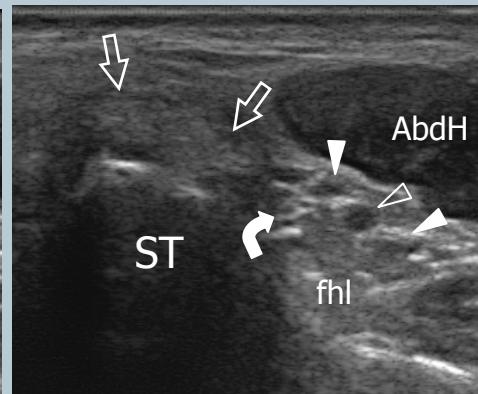
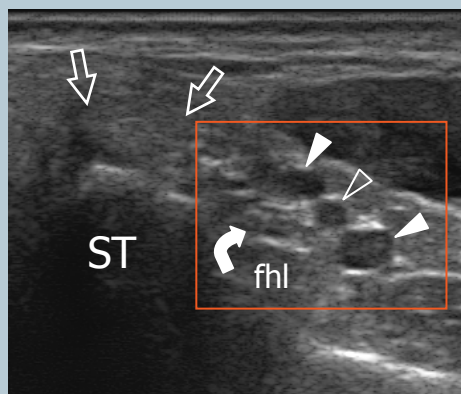


Behind the medial malleolus, place the transducer over the short-axis of the tibialis posterior and the flexor digitorum longus tendons. Follow the tibialis posterior from the myotendinous junction down to its insertion on short-axis planes. Check the presence of an accessory navicular bone on long-axis scans over the insertion of the tibialis posterior.

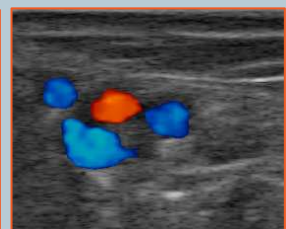
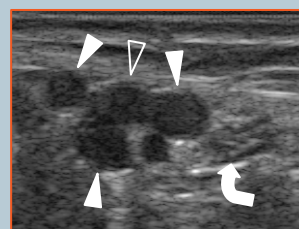
*Legend:* a, tibialis posterior artery; MM, medial malleolus; v, posterior tibial veins; void arrowheads, flexor digitorum longus tendon; white arrowheads, flexor retinaculum; white arrows, tibialis posterior tendon

## 9 tarsal tunnel and tibial nerve

Examine the flexor digitorum longus tendon down to reach the sustentaculum tali. Look at the flexor retinaculum, the posterior tibial vessels and the tibial nerve with its divisional branches (medial and lateral plantar nerves). Compression may help to assess whether the veins are patent.



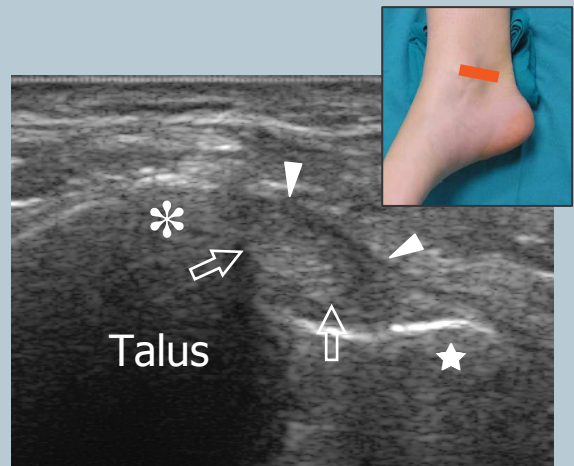
*Legend:* AbdH, abductor hallucis muscle; curved arrow, tibial nerve; fhl, flexor hallucis longus tendon; ST, sustentaculum tali; straight arrows, flexor digitorum longus tendon; void arrowhead, posterior tibial artery; white arrowheads, posterior tibial veins



## 10 flexor hallucis longus tendon (short-axis)

In the same position, look more posteriorly to demonstrate the flexor hallucis longus. Bony landmarks are the lateral and medial talar tubercles. The tendon lies in between them. Use passive flexion-extension of the great toe to assess this tendon while it curves over the posterior talus. Follow this tendon on short-axis plane as it passes under the sustentaculum tali and crosses the flexor digitorum longus.

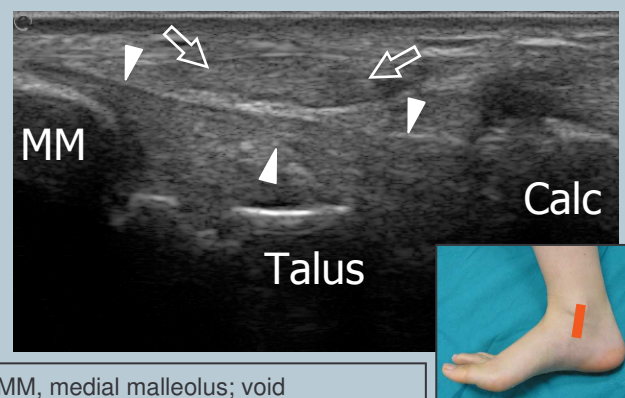
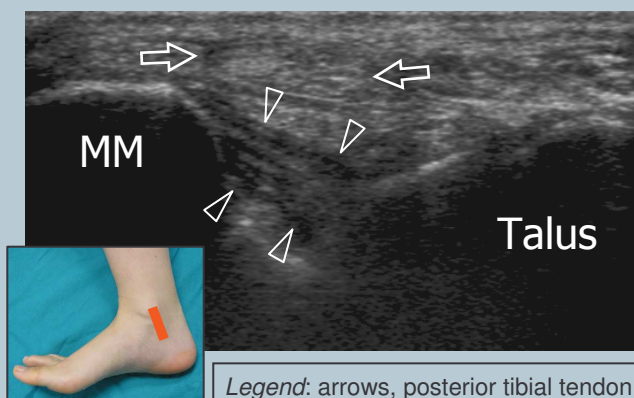
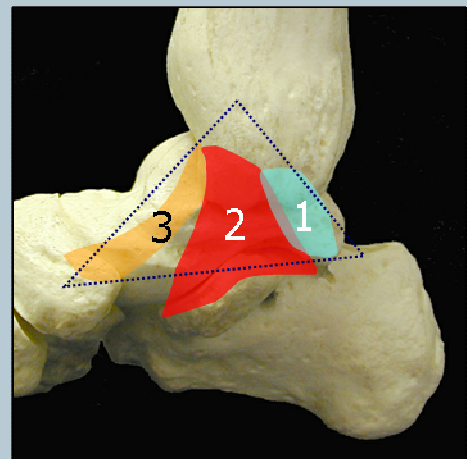
*Legend:* asterisk, medial tubercle; star, lateral tubercle; arrows, flexor hallucis longus tendon; arrowheads, retinaculum



## 11 deltoid ligament

The posterior part of the deltoid ligament is examined while dorsiflexing the foot by means of coronal scans. The superior edge of the transducer is kept over the tip of the medial malleolus whereas the inferior edge is rotated slightly posterior (tibiotalar), parallel or slightly anterior (tibiocalcaneal) to it. The anterior part (tibionavicular) of the ligament is best seen in a neutral position. Look at the spring ligament (lateral calcaneonavicular) ligament which lies straight between the sustentaculum tali and the navicular bone.

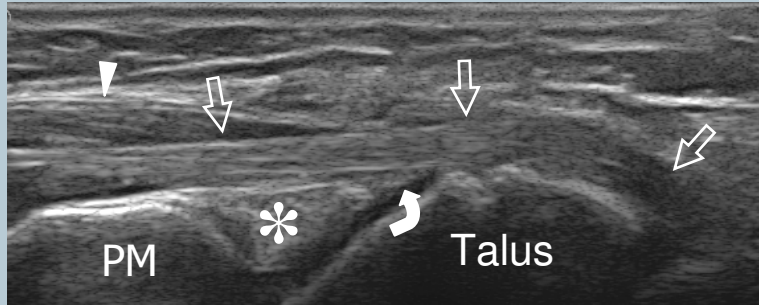
*Legend:* Deltoid ligament components. 1, tibiotalar ligament; 2, tibiocalcaneal ligament; 3, tibionavicular ligament



*Legend:* arrows, posterior tibial tendon; MM, medial malleolus; void arrowheads, tibiotalar ligament; white arrowheads, tibiocalcaneal ligament; Calc, calcaneus

## 12 flexor hallucis longus tendon (long-axis) and posterior joint recess

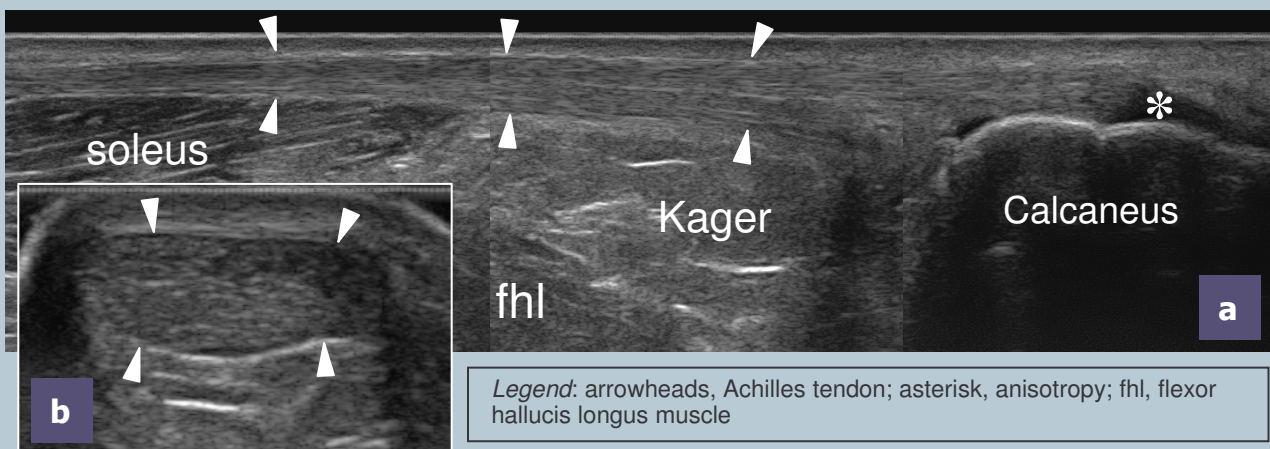
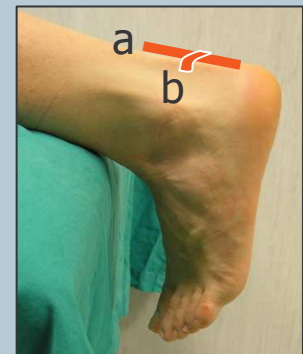
Place the patient prone with the foot resting on the toes over the table to maintain the foot perpendicular to the leg. The probe is positioned just medial to the Achilles tendon in an oblique sagittal plane to examine the proximal portion of the flexor hallucis longus in its long-axis and the posterior recesses of the tibiotalar and subtalar joints. Fluid in the posterior recess may travel anteriorly in this position.



*Legend:* asterisk, posterior fat pad; arrowhead, flexor hallucis longus muscle; curved arrow, posterior ankle recess; straight arrows, flexor hallucis longus tendon; PM, posterior tibial malleolus

## 13 Achilles tendon

On a prone position, let the foot hanging out of the examination table. Look clinically to the position of the foot, comparing both sides to see any differences that can lead to the diagnosis of Achilles tendon full-thickness tear. Then, examine the Achilles tendon from its myotendinous junction to its calcaneal insertion by means of transverse and longitudinal planes. While scanning the Achilles tendon on short-axis planes, tilt the probe on each side of the tendon to assess the peritendinous envelope. Measure the size of the Achilles tendon only on transverse planes. The Achilles tendon has to be followed down to its calcaneal insertion. Check the retroachilles and the retrocalcaneal bursae.

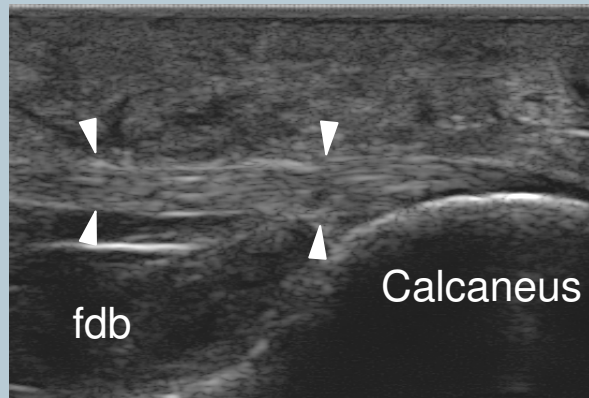


*Legend:* arrowheads, Achilles tendon; asterisk, anisotropy; fhl, flexor hallucis longus muscle

Check the plantaris tendon. In cases of complete Achilles tendon tear, the plantaris may mimic residual intact fibers of the Achilles. Dynamic scanning during passive dorsal and plantar flexion help to distinguish partial from complete Achilles tendon tears.

# 14 plantar fascia

In the same position described at point-13, place the transducer over the plantar aspect of the hindfoot to examine the calcaneal insertion of the plantar fascia. Long-axis scans obtained just medial to midline are used. Measure the fascia at the point where it leaves the calcaneal tuberosity. The gain may be increased to avoid beam absorption by the thick plantar sole.



*Legend: arrowheads, plantar fascia; fdb, flexor digitorum brevis muscle*





**European Society of  
MusculoSkeletal Radiology**

# **Musculoskeletal Ultrasound Technical Guidelines**

## **II. Elbow**

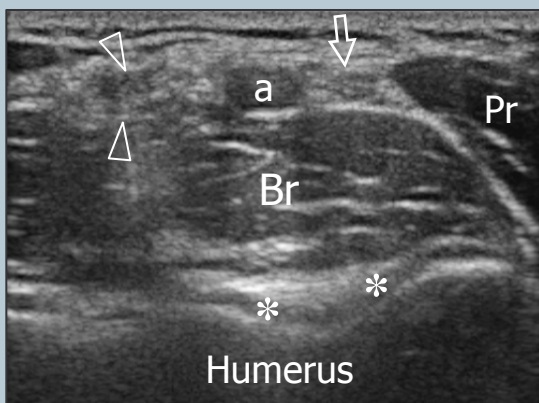
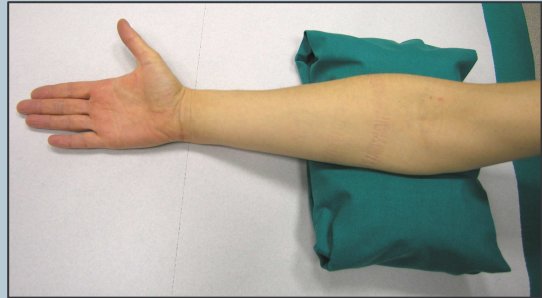
Ian Beggs, UK  
Stefano Bianchi, Switzerland  
Angel Bueno, Spain  
Michel Cohen, France  
Michel Court-Payen, Denmark  
Andrew Grainger, UK  
Franz Kainberger, Austria  
Andrea Klauser, Austria  
Carlo Martinoli, Italy  
Eugene McNally, UK  
Philip J. O'Connor, UK  
Philippe Peetrons, Belgium  
Monique Reijnierse, The Netherlands  
Philipp Rempik, Germany  
Enzo Silvestri, Italy

## Note

The systematic scanning technique described below is only theoretical, considering the fact that the examination of the elbow is, for the most, focused to one quadrant only of the joint based on clinical findings.

## 1 ANTERIOR ELBOW

For examination of the anterior elbow, the patient is seated facing the examiner with the elbow in an extension position over the table. The patient is asked to extend the elbow and supinate the forearm. A slight bending of the patient's body toward the examined side makes full supination and assessment of the anterior compartment easier. Full elbow extension can be obtained by placing a pillow under the joint.

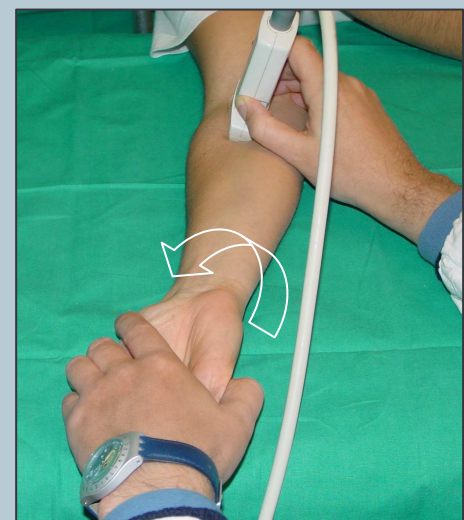


Transverse US images are first obtained by sweeping the probe from approximately 5cm above to 5cm below the trochlea-ulna joint, perpendicular to the humeral shaft. Cranial US images of the supracondylar region reveal the superficial biceps and the deep brachialis muscles. Alongside and medial to these muscles, follow the brachial artery and the median nerve: the nerve lies medially to the artery.

*Legend: a, brachial artery; arrow, median nerve; arrowheads, distal biceps tendon; asterisks, articular cartilage of the humeral trochlea; Br, brachialis muscle; Pr, pronator muscle*

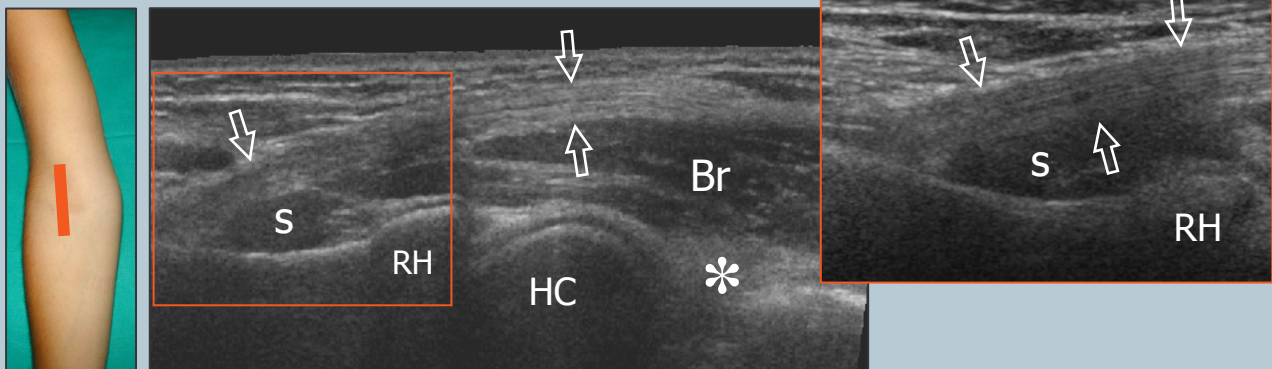
## 2 distal biceps tendon: technique

The distal biceps tendon is examined while keeping the patient's forearm in maximal supination to bring the tendon insertion on the radial tuberosity into view. Because of an oblique course from surface to depth, portions of this tendon may appear artifactually hypoechoic if the probe is not maintained parallel to it. Accordingly, the distal half of the probe must be gently pushed against the patient's skin to ensure parallelism between the US beam and the distal biceps tendon thus allowing adequate visualization of its fibrillar pattern.



## 2 distal biceps tendon

The distal biceps tendon is best examined on its long-axis. Short-axis planes are less useful to examine the distal portion of the biceps because slight changes in probe orientation may produce dramatic variation in tendon echogenicity and create confusion between the tendon and the adjacent artery.

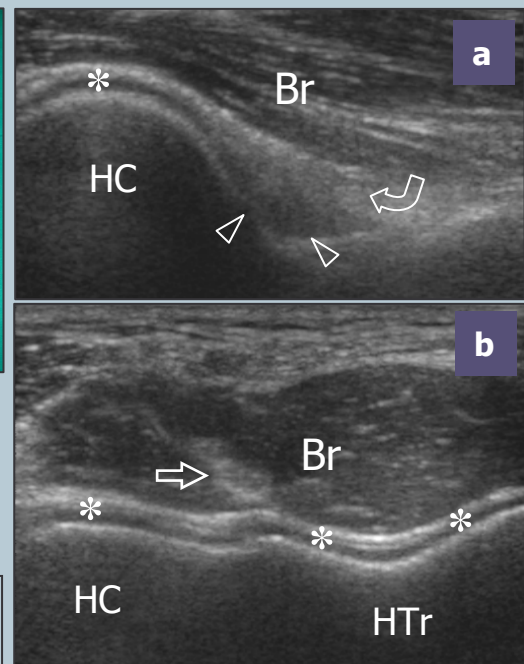


*Legend:* arrows, distal biceps tendon; asterisk, coronoid fossa and anterior fat pad; Br, brachialis muscle; HC, humeral capitellum; RH, radial head; s, supinator muscle

Follow the short brachialis tendon on long-axis planes down to its insertion on the coronoid process.

## 3 anterior joint recess

With medial sagittal planes check the coronoid fossa which appears as a concavity of the anterior surface of the humerus filled with the anterior fat pad. In normal states, a small amount of fluid may be seen between the fat pad and the humerus. On transverse scans, the anterior distal humeral epiphysis appears as a wavy hyperechoic line covered by a thin layer of hypoechoic articular cartilage: its lateral third corresponds to the humeral capitellum (round), whereas its medial two thirds relate to the humeral trochlea (V-shaped). On sagittal planes, the radial head exhibits a squared appearance: its articular facet is covered by cartilage.

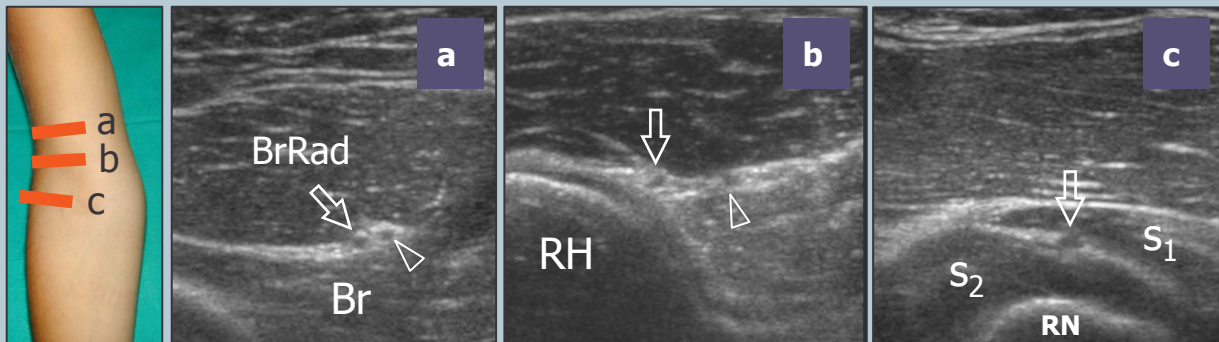
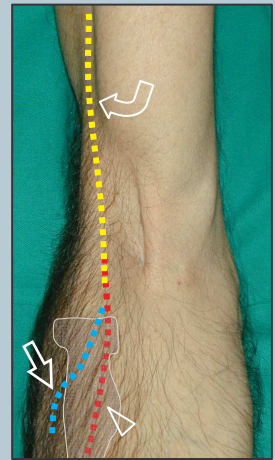


*Legend:* arrow, brachialis tendon; arrowheads, anterior coronoid recess; asterisks, articular cartilage of distal humeral epiphysis; Br, brachialis muscle; curved arrow, anterior fat pad; HC, humeral capitellum; HTr, humeral trochlea

## 4 radial and posterior interosseous nerves

Moving to the anterolateral elbow, follow the main trunk of the radial nerve in its short-axis between the brachioradialis and the brachialis muscle down to its bifurcation into the superficial sensory branch and the posterior interosseous nerve. Continue to follow these latter nerves according to their short-axis with meticulous scanning technique. The posterior interosseous nerve must be demonstrated using short-axis planes as it pierces the supinator muscle and enters the arcade of Fröhse passing between the superficial and deep parts of this muscle. Evaluation of the posterior interosseous nerve is made easier by sweeping the probe over the supinator in a transverse plane while performing forearm pronation and supination.

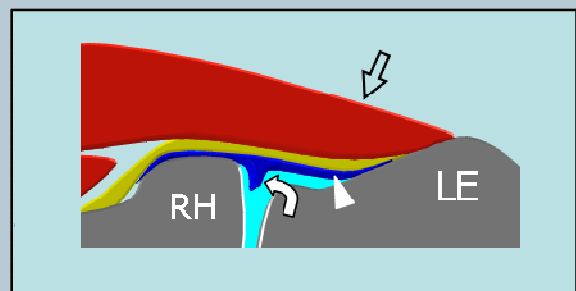
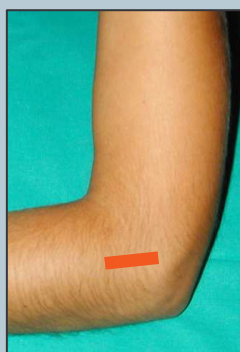
*Legend:* arrow, posterior interosseous nerve; arrowhead, cutaneous sensory branch of the radial nerve; Br, brachialis muscle; BrRad, brachioradialis muscle; curved arrow, main trunk of the radial nerve; RH, radial head; RN, radial neck; s<sub>1</sub>, superficial head of the supinator muscle; s<sub>2</sub>, deep head of the supinator muscle



## 5 LATERAL ELBOW: common extensor tendon

The lateral aspect of the elbow is examined with both elbows in extension, thumbs up, palms of hands together or with the elbow in flexion. The common extensor tendon is visualized on its long-axis using coronal planes with the cranial edge of the probe placed on the lateral epicondyle.

Short-axis planes should be also obtained over the tendon insertion. In normal conditions, the lateral ulnar collateral ligament cannot be separated from the overlying extensor tendon due to a similar fibrillar echotexture.

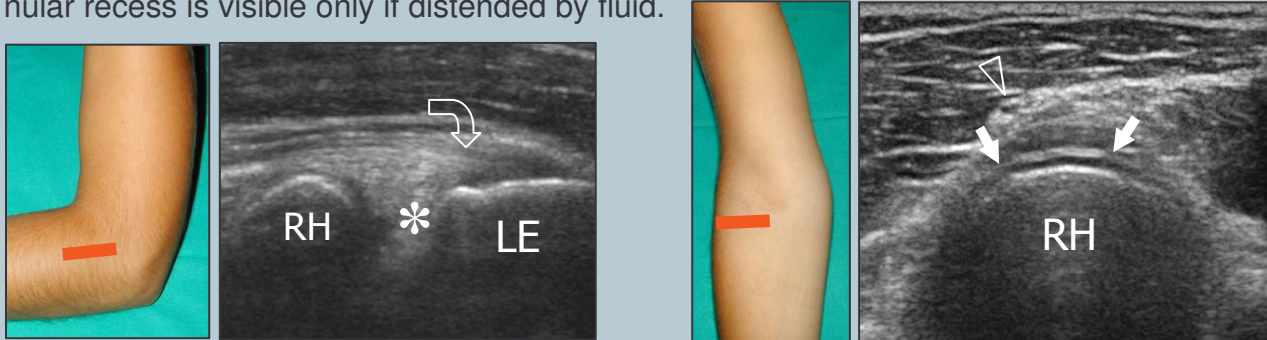


*Legend:* arrowhead; lateral ulnar collateral ligament; curved arrow, lateral synovial fringe; LE, lateral epicondyle; RH, radial head; straight arrows, common extensor tendon



## 6 radiocapitellar joint

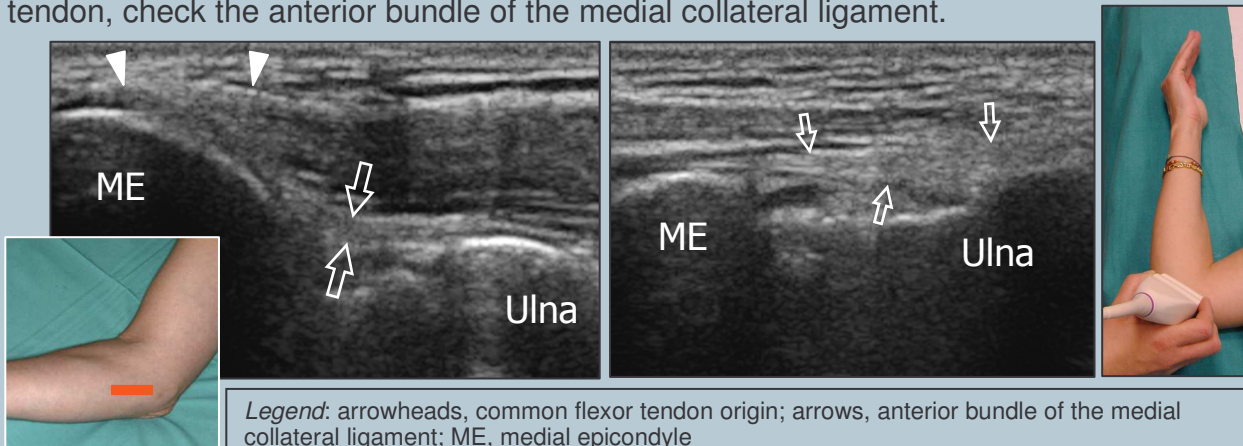
Check the lateral synovial fringe that fills the superficial portion of the lateral aspect of the radiocapitellar joint. Dynamic scanning during passive pronation and supination of the forearm may help to assess the status of the radial head and to rule out possible occult fractures. With this manoeuvre, check the annular ligament. At the radial neck, the annular recess is visible only if distended by fluid.



*Legend:* arrowhead; posterior interosseous nerve; asterisk, lateral synovial fringe; curved arrow, common extensor tendon; LE, lateral epicondyle; RH, radial head; straight arrow, annular ligament

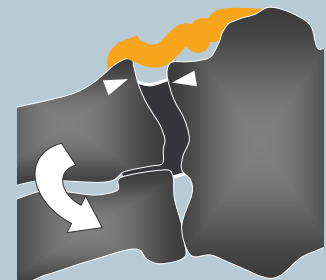
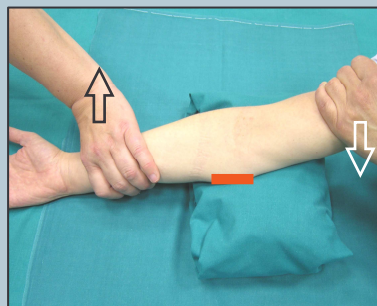
## 7 MEDIAL ELBOW: common flexor tendon and medial collateral ligament

For examination of the medial elbow, the patient is asked to lean toward the ipsilateral side with the forearm in forceful external rotation while keeping the elbow extended or slightly flexed, resting on a table. Coronal planes with the cranial edge of the probe placed over the medial epicondyle (epitrochlea) reveal the common flexor tendon in its long-axis. The tendon is shorter and larger than the common extensor tendon. Deep to this tendon, check the anterior bundle of the medial collateral ligament.



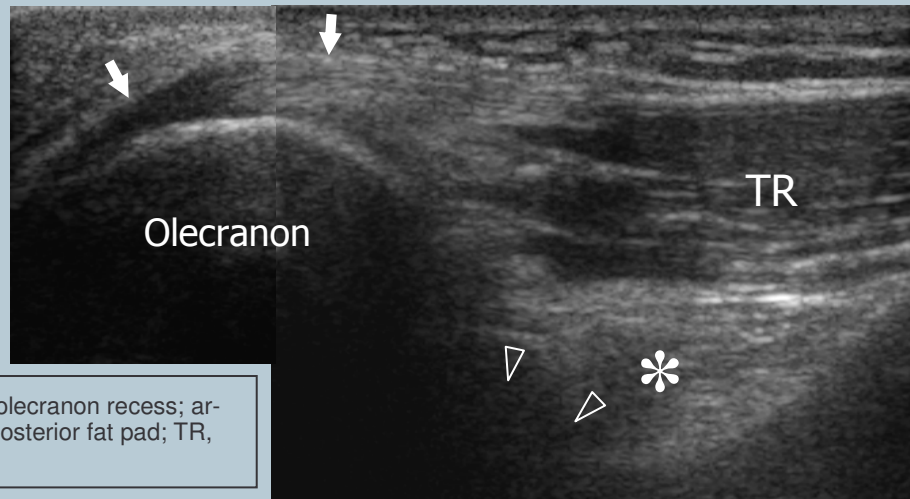
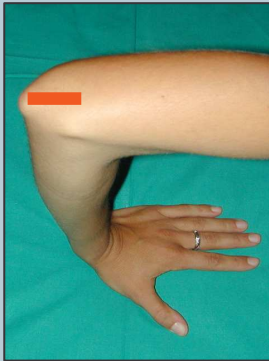
*Legend:* arrowheads, common flexor tendon origin; arrows, anterior bundle of the medial collateral ligament; ME, medial epicondyle

More adequate positioning for examination of this ligament is obtained with the patient supine keeping the shoulder abducted and externally rotated and the elbow in 90° of flexion. Dynamic scanning in valgus stress (demonstration of joint space widening) may be useful in partial tears, in which the ligament is continuous but lax.



## 8 POSTERIOR ELBOW: triceps tendon

The posterior elbow may be examined by keeping the joint flexed 90° with the palm resting on the table. Cranial to the olecranon, the triceps muscle and tendon are evaluated by means of long-axis and short-axis scans. The most distal portion of the triceps tendon needs to be carefully examined to rule out enthesitis.



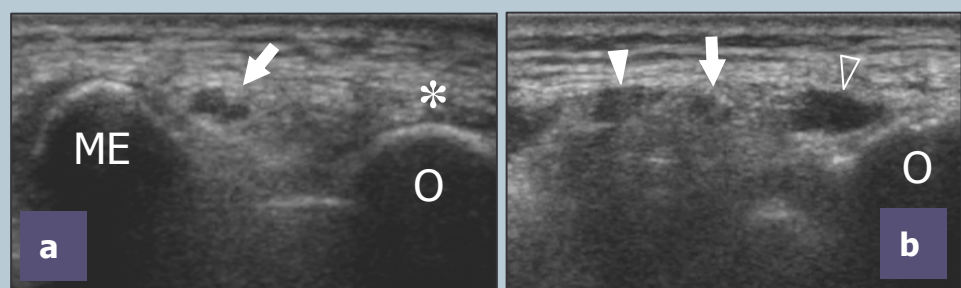
*Legend:* arrowheads, posterior olecranon recess; arrows, triceps tendon; asterisk, posterior fat pad; TR, triceps muscle

Deep to the triceps, the olecranon fossa and the posterior olecranon recess are evaluated by means of long-axis and short-axis scans. While examining the joint at 45° flexion, intraarticular fluid tends to move from the anterior synovial space to the olecranon recess, thus making easier the identification of small effusions. Gentle rocking motion (backward and forward) of the patient's elbow during scanning may be helpful to shift elbow joint fluid into the olecranon recess. Care should be taken not to apply excessive pressure with the probe when evaluating the superficial olecranon bursa because small bursal effusions may be squeezed away.

## 9 cubital tunnel and ulnar nerve



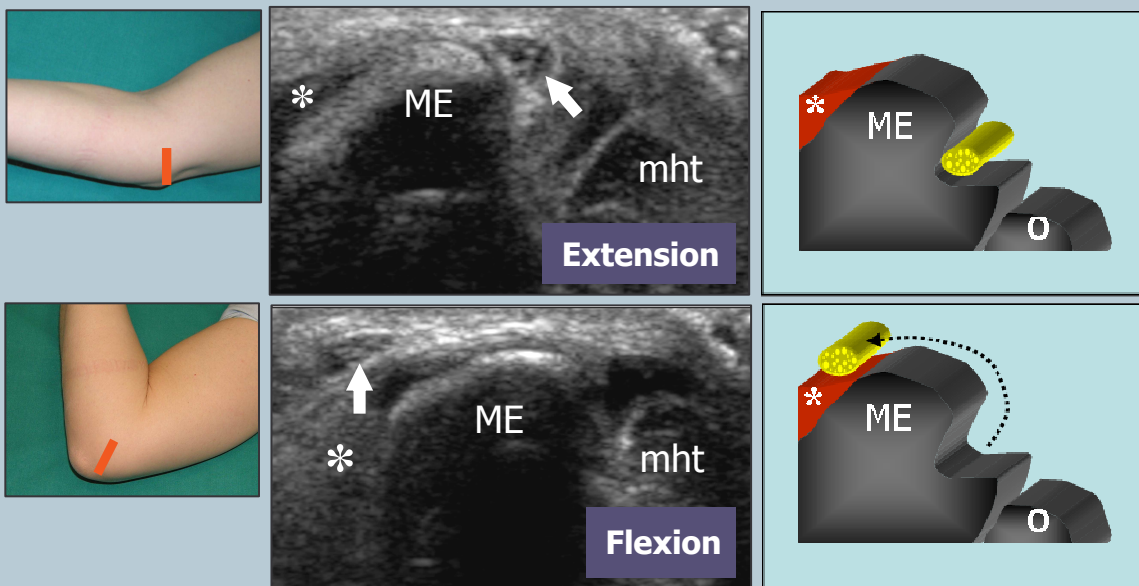
For evaluation of the cubital tunnel, the patient's elbow should be placed in forceful internal rotation with ex-tended elbow (olecranon facing the examiner). The ulnar nerve is examined in its short-axis (long-axis scans are less useful) from the distal arm through the distal forearm. Care should be taken to identify nerve shape changes across the epicondylar groove (a) and the cubital tunnel (b).



*Legend:* arrow, ulnar nerve; asterisk, triceps tendon; ME, medial epicondyle; O, olecranon process; void arrowhead, ulnar head of the flexor carpi ulnaris muscle; white arrowhead, humeral head of the flexor carpi ulnaris muscle; 1, cubital tunnel retinaculum (Osborne ligament); 2, arcuate ligament; 3, flexor carpi ulnaris muscle

# 10 ulnar nerve instability

Dynamic imaging of the cubital tunnel is performed either with the patient seated and the elbow placed on a stiff pillow or, at least for the right side, with the patient supine and the arm abducted, hanging out of the table. The position of the ulnar nerve and the medial head of the triceps relative to the medial epicondyle is assessed throughout elbow flexion while placing the probe in the transverse plane with one edge on the olecranon and the other on the medial epicondyle. During this manoeuvre, it should be emphasized that the application of firm pressure on the skin with the transducer must be avoided because it may prevent the anterior dislocation of the nerve from the tunnel.



*Legend:* Ulnar nerve instability. Arrow, ulnar nerve; asterisk, common flexor tendon; ME, medial epicondyle; mht, medial head of triceps muscle; O, olecranon process. During flexion, the ulnar nerve snaps out of the cubital tunnel. Ulnar nerve instability is related to the absence of the Osborne retinaculum



**European Society of  
MusculoSkeletal Radiology**

# **Musculoskeletal Ultrasound Technical Guidelines**

## **III. Wrist**

Ian Beggs, UK  
Stefano Bianchi, Switzerland  
Angel Bueno, Spain  
Michel Cohen, France  
Michel Court-Payen, Denmark  
Andrew Grainger, UK  
Franz Kainberger, Austria  
Andrea Klauser, Austria  
Carlo Martinoli, Italy  
Eugene McNally, UK  
Philip J. O'Connor, UK  
Philippe Peetrans, Belgium  
Monique Reijnierse, The Netherlands  
Philipp Rempik, Germany  
Enzo Silvestri, Italy



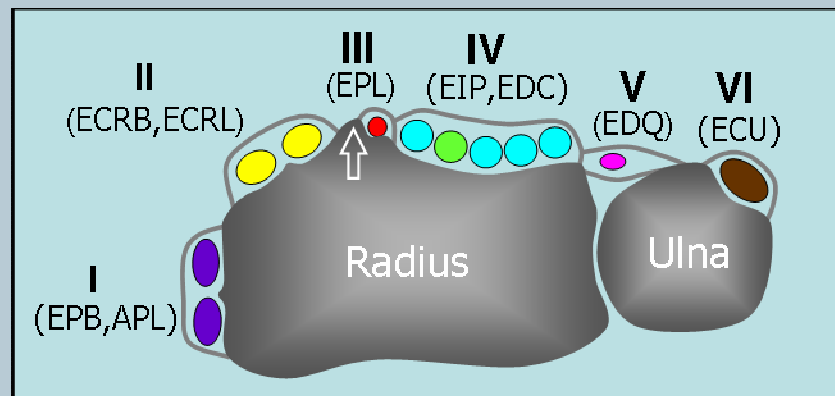
## Note

The standard US examination of the wrist begins with evaluation of its dorsal aspect, followed by the palmar one. Depending on the specific clinical presentation, US images can be obtained in different position of the wrist (flexion and extension, radial and ulnar deviation, pronation and supination), with the patient seated in front of the examiner.

## 1 DORSAL WRIST: compartments of extensor tendons

Place the transducer on a transverse plane over the dorsal aspect of the wrist to allow proper identification of the extensor tendons. In general, one should first recognize a given tendon and then follow it on short-axis planes down to the distal insertion. Long-axis US images of the extensor tendons are less useful: they may help to evaluate the integrity of tendons and assess their dynamic motion in detail. Dynamic scanning of the extensor tendons can be performed by placing the hand on a gel tube with the fingers hanging outside its edge to allow easy fingers movements.

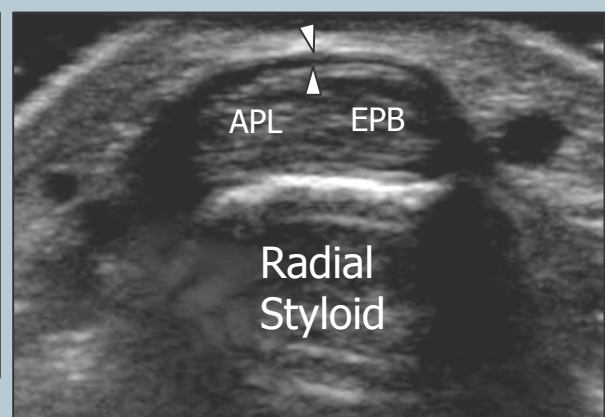
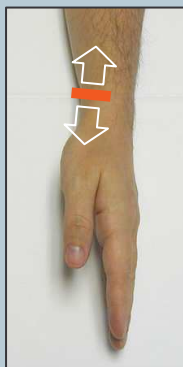
*Legend:* APL, abductor pollicis longus; EPB, extensor pollicis brevis; ECRL, extensor carpi radialis longus; EPCB, extensor carpi radialis brevis; EPL, extensor pollicis longus; EIP, extensor indicis proprius; EDC, extensor digitorum longus; EDQ, extensor digiti quinti proprius; ECU, extensor carpi ulnaris



## 2 first compartment

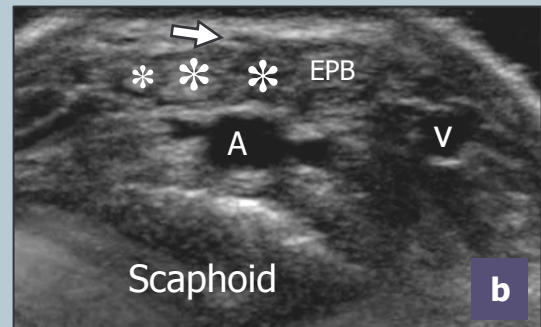
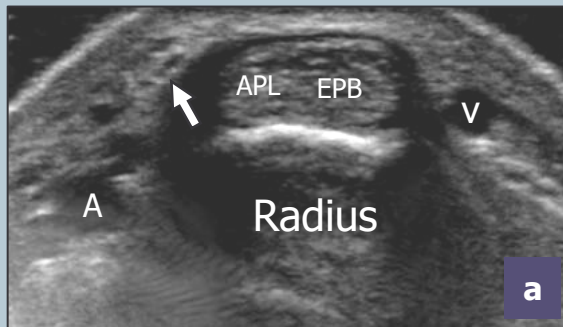
Keeping the patient's wrist halfway between pronation and supination, place the probe over the lateral aspect of the radial styloid to examine the first compartment of the extensor tendons - abductor pollicis longus (ventral) and extensor pollicis brevis (dorsal). Check the retinaculum and note the possible occurrence of a vertical septum that splits the compartment in two distinct spaces. Follow the abductor pollicis longus distally over the scaphoid to assess possible accessory tendons.

*Legend:* APL, abductor pollicis longus; arrowheads, retinaculum; EPB, extensor pollicis brevis



### 3 radial artery and radial nerve

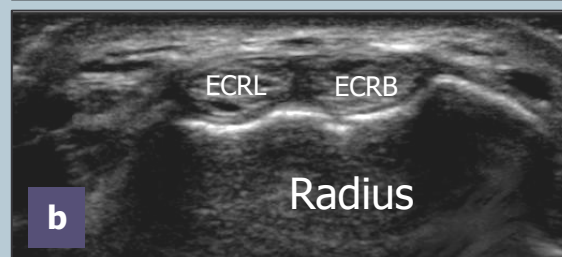
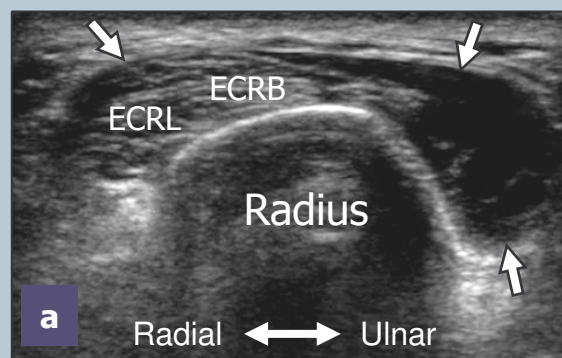
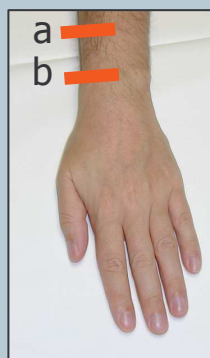
Look at the radial artery and the sensory branch of the radial nerve, the first encroaching deep, the second superficial to the first compartment. Scanning from proximal to distal, note the radial nerve and its branches snapping from ventral to dorsal over these tendons.



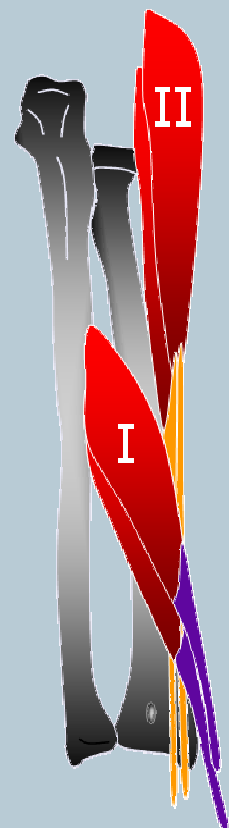
*Legend:* A, radial artery; APL, abductor pollicis longus tendon; arrow, radial nerve; asterisks, tendinous slips of the abductor pollicis longus; EPB, extensor pollicis brevis tendon; v, cephalic vein

### 4 second compartment

With the palm facing the examination table, shift the probe medially on transverse planes to depict the second compartment - extensor carpi radialis longus and extensor carpi radialis brevis tendons. Sweep the probe cranially over these tendons up to demonstrate the abductor pollicis longus and extensor pollicis brevis muscles that encroach superficial to them at the distal forearm (intersection) to reach the first compartment.



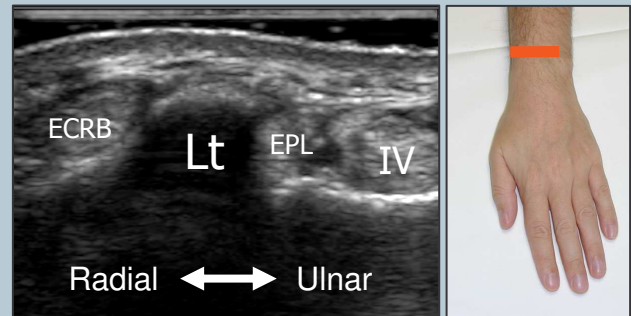
*Legend:* ECRL, extensor carpi radialis longus tendon; ECRB, extensor carpi radialis brevis tendon; arrows, bulk of the abductor longus and extensor pollicis brevis muscles crossing superficial to the tendons of the II compartment; I, first compartment; II, second compartment



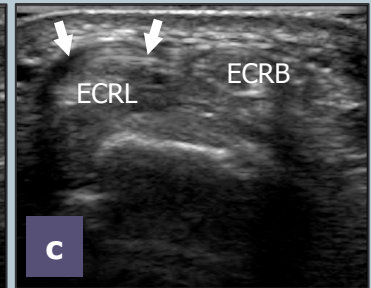
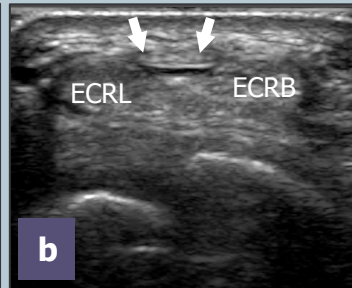
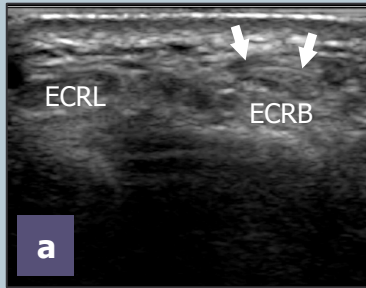
## 5 third compartment

Find the Lister tubercle over the dorsal radius as the bone landmark to separate the second compartment (lateral) from the third compartment (medial).

*Legend:* ECRB, extensor carpi radialis brevis tendon; Lt, Lister tubercle; EPL, extensor pollicis longus tendon; IV, fourth compartment of extensor tendons



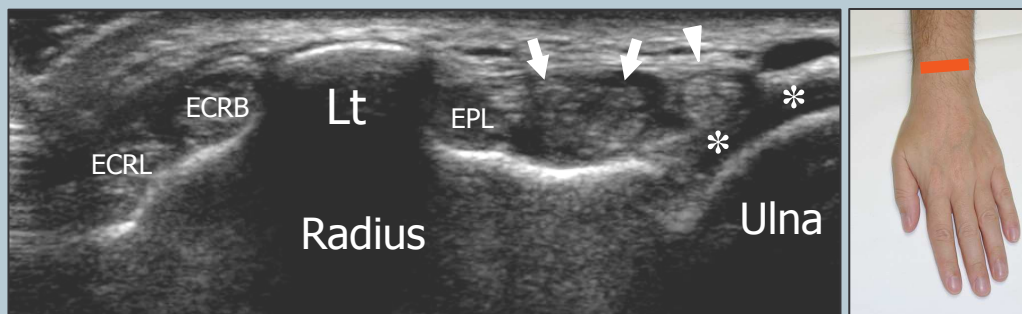
Once detected at the medial side of the Lister tubercle, the extensor pollicis longus tendon must be followed on short-axis scans down to its insertion. Care should be taken to demonstrate this tendon as it crosses the extensor carpi radialis brevis and extensor carpi radialis longus tendons.



*Legend:* arrows, extensor pollicis longus tendon; ecrb, extensor carpi radialis brevis tendon; ecrb, extensor carpi radialis longus tendon

## 6 fourth and fifth compartment

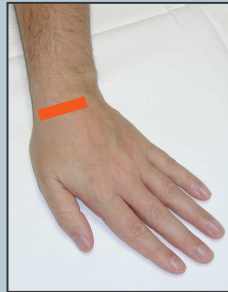
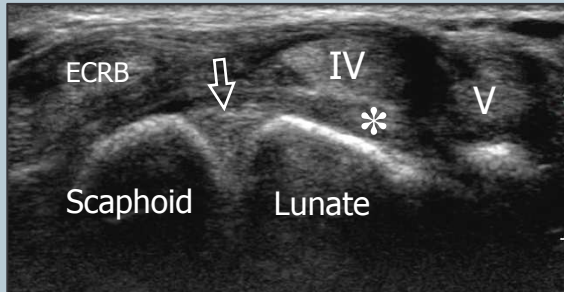
Place the transducer on the transverse plane over the mid dorsal wrist to examine the fourth – extensor digitorum communis and extensor indicis proprius – and fifth – extensor digiti minimi – compartments. Dynamic examination during finger flexion and extension may aid to differentiate the individual tendons of the fourth compartment. Dynamic scanning is also useful to identify the extensor digiti minimi.



*Legend:* arrowhead, V compartment of extensor tendons (extensor digiti quinti proprius); arrows, IV compartment of extensor tendons (extensor digitorum communis; extensor indicis proprius); asterisks, articular cartilage of the ulnar head; EPL, extensor pollicis longus; ECRB, extensor carpi radialis brevis tendon; ECRB, extensor carpi radialis longus tendon

## 7 scapholunate ligament

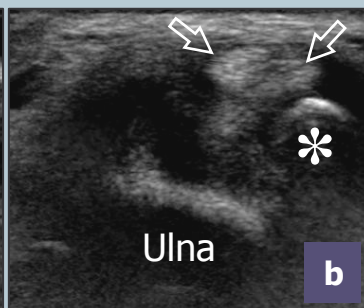
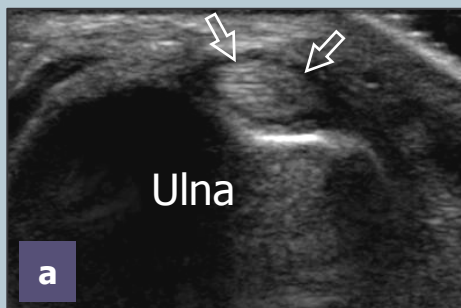
Sweeping the probe distally from the level of the Lister tubercle on transverse planes, image the dorsal portion of the scapholunate ligament. Ulnar deviation of the wrist may be useful to assess the integrity of this ligament.



*Legend:* arrow, dorsal part of the scapholunate ligament; asterisk, dorsal carpal ligaments; ECRB, extensor carpi radialis brevis tendon; IV, fourth compartment of extensor tendons; V, fifth compartment of extensor tendons;

## 8 sixth compartment

Place the wrist in slight radial deviation to examine the sixth compartment – extensor carpi ulnaris. Short-axis and long-axis planes should be obtained over this tendon.



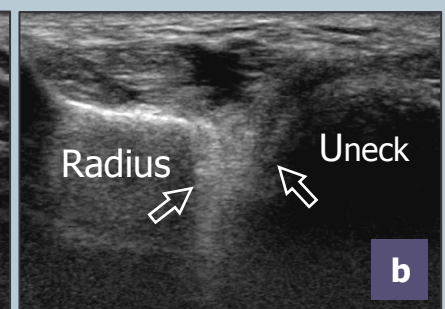
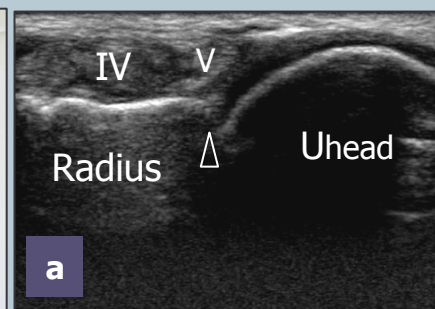
*Legend:* arrows, extensor carpi ulnaris tendon; asterisk, styloid process of the ulna

Look at the styloid process of the ulna and at the gap between the styloid and the radius filled with the triangular fibrocartilage complex: this structure can be evaluated partially by means of transverse and oblique coronal images.

## 9 distal radioulnar joint

Examine the dorsal radioulnar joint by placing the probe on the transverse plane at a more proximal level than the joint line, where the capsule has a greater compliance to distension.

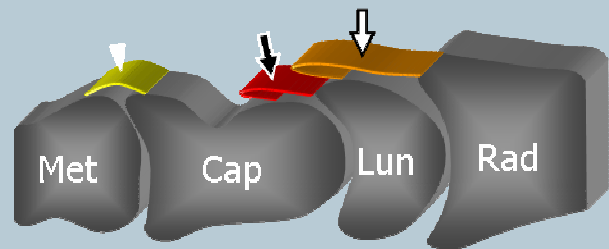
*Legend:* arrows, position of the distal radioulnar recess; arrowhead, distal radioulnar joint line; Uhead, ulnar head; Uneck, ulnar neck; IV, fourth compartment; V, fifth compartment



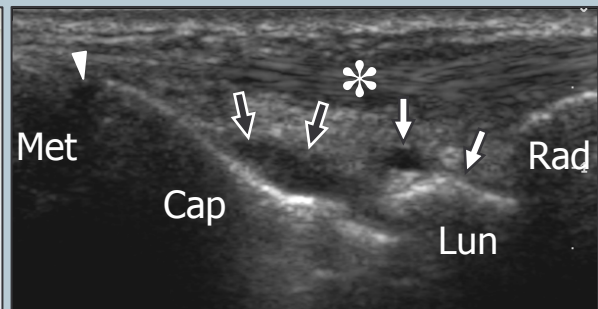
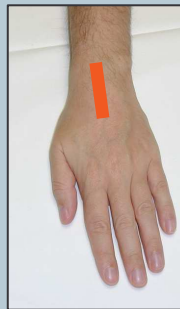


# 10 radiocarpal and midcarpal joints

Based on the hyperechoic profile of the carpal bones, localize the synovial recess of the radiocarpal and midcarpal joints using long-axis planes. Look for effusion or synovial thickening.

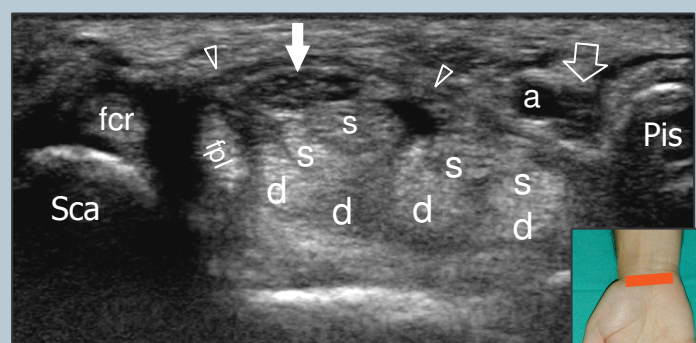
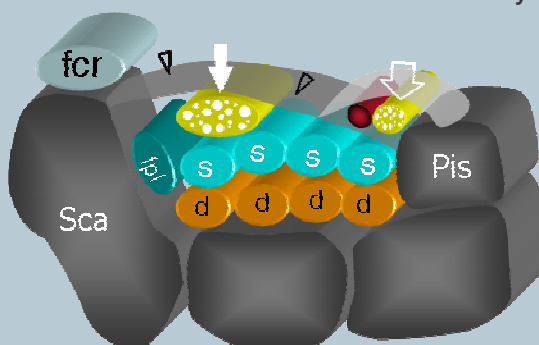


*Legend:* arrowhead, dorsal recess of the carpometacarpal joints; asterisk, IV compartment of the extensor tendons; black arrows, dorsal recess of the mid-tarsal joint; white arrows, dorsal recess of the radiocarpal joint; Rad, radius; Lun, lunate; Cap, capitate; Met, metacarpal



# 11 VENTRAL WRIST: proximal carpal tunnel

Moving to the volar aspect of the wrist, the patient keeps the dorsal wrist facing the examination table. Seek the bony landmarks of the proximal carpal tunnel – the scaphoid tubercle (radial sided) and the pisiform (ulnar sided) – placing the probe over the palmar crease on axial plane. Once detected, the probe orientation should be adjusted accordingly (one edge over the scaphoid, the other over the pisiform). Tilting the probe back and forth may help to optimize depiction of the soft-tissues contained within the tunnel. Check the flexor retinaculum and each of the nine long flexor tendons (four from the flexor digitorum superficialis, four from the flexor digitorum profundus and the flexor pollicis longus radially) contained within the carpal tunnel. Dynamic scanning during passive flexion and extension of the respective finger may help to assess their integrity. Check the content of the carpal tunnel to recognize possible abnormal findings, including anomalous muscles and flexor tenosynovitis.



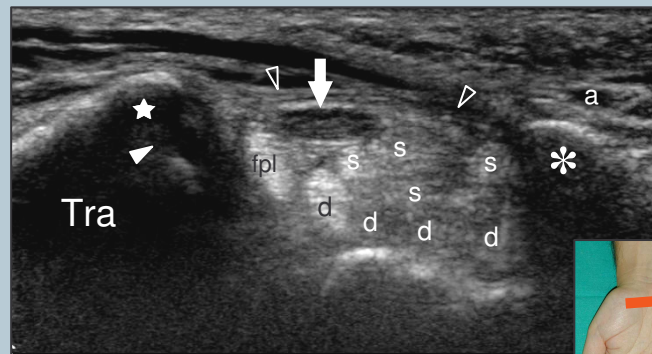
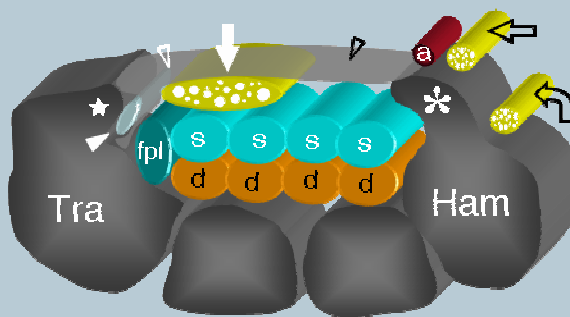
*Legend:* a, ulnar artery; arrowheads, flexor retinaculum; d, flexor digitorum profundus tendons; fcr, flexor carpi radialis tendon; fpl, flexor pollicis longus tendon; s, flexor digitorum superficialis tendons; void arrow, ulnar nerve; white arrows, median nerve



At the radial side of the carpal tunnel, check the flexor carpi radialis tendon that overlies the hyperechoic cortex of the scaphoid.

## 12 distal carpal tunnel

From the position described at point-8, shift the probe to a more distal transverse plane to identify the two bony landmarks of the distal carpal tunnel – the trapezium tubercle (radial sided) and the hamate hook (ulnar sided). Due to the oblique course of the flexor tendons and the median nerve towards depth, mild changes in probe orientation or slight flexion of the wrist should be performed to improve depiction of these structures.



**Legend:** a, ulnar artery; asterisk, hamate hook; curved arrow, deep motor branch of the ulnar nerve; d, flexor digitorum profundus tendons; fpl, flexor pollicis longus tendon; s, flexor digitorum superficialis tendons; star, tubercle of trapezium; void arrowheads, flexor retinaculum; void curved arrow, superficial sensory branch of the ulnar nerve; white arrowhead, flexor carpi radialis tendon; white arrows, median nerve

With probe positioning described at point-11 and point-12, sweep the transducer up and down over the median nerve. The median nerve should be systematically examined in its short-axis from the distal radius (cranial to the proximal edge of the retinaculum) through the palm (beyond the distal edge of the retinaculum). Care should be taken to identify anatomical variants (bifid nerve, persistent median artery of the forearm) and changes in the nerve cross-sectional area occurring at the carpal tunnel level.

## 13 Guyon tunnel and ulnar nerve

Move the transducer medially on the transverse plane to examine the Guyon tunnel. Use the pisiform as a landmark. Check the ulnar artery (radial-sided) and the ulnar nerve (ulnar-sided). Follow the nerve distally on short-axis planes to examine its two divisional branches – the superficial sensory branch and the deep motor branch (the latter coursing alongside the hamate hook).

**Legend:** a, ulnar artery; asterisk, hamate hook; curved arrow, deep motor branch of the ulnar nerve; void arrowheads, flexor retinaculum; void straight arrow, superficial sensory branch of the ulnar nerve; white arrowhead, arcade of the flexor brevis; white arrow, main trunk of the ulnar nerve

